

SRPK1 Rabbit Polyclonal Antibody



CAB5854

Product Information

Size:

20uL, 50uL, 100uL, 200uL

Observed MW:

74kDa/80kDa

Calculated MW:

72kDa/74kDa/92kDa

Applications:

WB IHC IF

Reactivity:

Human, Mouse, Rat

Antibody Information

Recommended dilutions:

WB 1:500 - 1:2000 IHC 1:50
- 1:200 IF 1:10 - 1:100

Source:

Rabbit

Isotype:

IgG

Purification:

Affinity purification

Protein Background

This gene encodes a serine/arginine protein kinase specific for the SR (serine/arginine-rich domain) family of splicing factors. The protein localizes to the nucleus and the cytoplasm. It is thought to play a role in regulation of both constitutive and alternative splicing by regulating intracellular localization of splicing factors. Alternative splicing of this gene results in multiple transcript variants. Additional alternatively spliced transcript variants have been described for this gene, but their full length nature have not been determined.

Immunogen information

Gene ID:

6732

Uniprot

Q96SB4

Synonyms:

SRPK1; SFRSK1

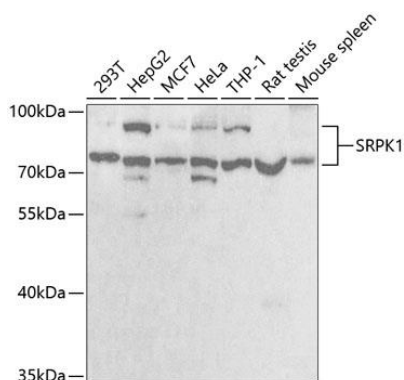
Immunogen:

Recombinant fusion protein containing a sequence corresponding to amino acids 290-480 of human SRPK1 (NP_003128.3).

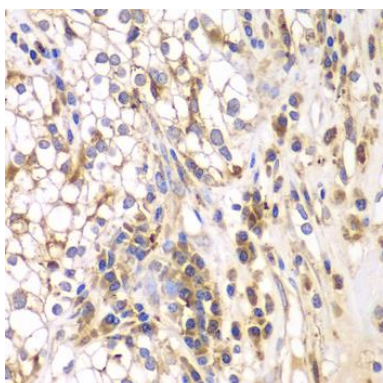
Storage:

Store at -20°C. Avoid freeze / thaw cycles. Buffer: PBS with 0.02% sodium azide, 50% glycerol, pH7.3.

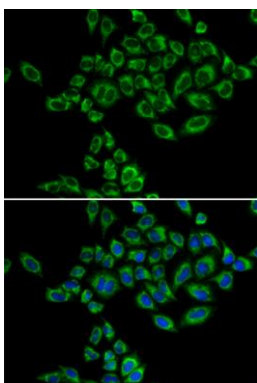
Product Images



Western blot analysis of extracts of various cell lines, using SRPK1 antibody (CAB5854) at 1:1000 dilution. Secondary antibody: HRP Goat Anti-Rabbit IgG (H+L) (CABS014) at 1:10000 dilution. Lysates/proteins: 25ug per lane. Blocking buffer: 3% nonfat dry milk in TBST. Detection: ECL Enhanced Kit (CABM00021). Exposure time: 20s.



Immunohistochemistry of paraffin-embedded human kidney cancer using SRPK1 antibody (CAB5854) at dilution of 1:200 (40x lens).



Immunofluorescence analysis of HeLa cells using SRPK1 antibody (CAB5854). Blue: DAPI for nuclear staining.