

# SUV39H2 Rabbit Polyclonal Antibody



CAB5855

---

## Product Information

### Size:

20uL, 50uL, 100uL, 200uL

### Observed MW:

48kDa

### Calculated MW:

26kDa/39kDa/46kDa

### Applications:

WB IF IP ChIP

### Reactivity:

Human, Mouse, Rat

## Antibody Information

### Recommended dilutions:

WB 1:500 - 1:2000 IF 1:50 -  
1:200 ChIP 1:20 - 1:100

### Source:

Rabbit

### Isotype:

IgG

### Purification:

Affinity purification

## Protein Background

### Immunogen information

#### Gene ID:

79723

#### Uniprot

Q9H511

#### Synonyms:

SUV39H2; KMT1B

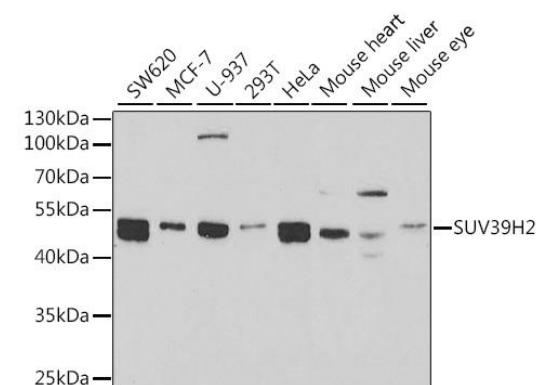
#### Immunogen:

Recombinant fusion protein containing a sequence corresponding to amino acids 141-350 of human SUV39H2 (NP\_001180354.1).

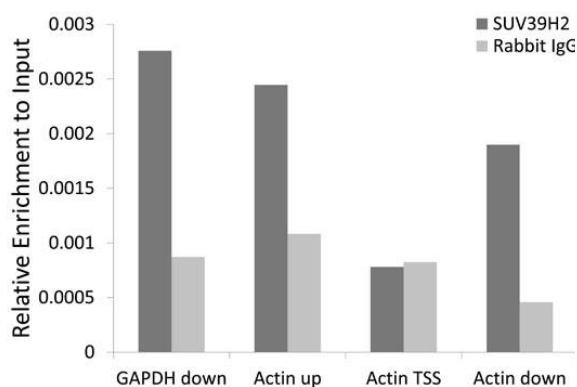
#### Storage:

Store at -20°C. Avoid freeze / thaw cycles. Buffer: PBS with 0.02% sodium azide, 50% glycerol, pH7.3.

## Product Images



Western blot analysis of extracts of various cell lines, using SUV39H2 antibody (CAB5855) at 1:1000 dilution. Secondary antibody: HRP Goat Anti-Rabbit IgG (H+L) (CABS014) at 1:10000 dilution. Lysates/proteins: 25ug per lane. Blocking buffer: 3% nonfat dry milk in TBST.



Chromatin immunoprecipitation analysis of extracts of 293T cell line, using SUV39H2 antibody (CAB5855) and rabbit IgG. The amount of immunoprecipitated DNA was checked by quantitative PCR. Histogram was constructed by the ratios of the immunoprecipitated DNA to the input.