

# TNFSF13B Rabbit Polyclonal Antibody



CAB5858

## Product Information

### Size:

20uL, 50uL, 100uL, 200uL

### Observed MW:

42kDa

### Calculated MW:

17kDa/29kDa/31kDa

### Applications:

WB IHC IF

### Reactivity:

Human, Mouse, Rat

## Antibody Information

### Recommended dilutions:

WB 1:500 - 1:2000 IHC 1:50  
- 1:200 IF 1:50 - 1:100

### Source:

Rabbit

### Isotype:

IgG

### Purification:

Affinity purification

## Protein Background

The protein encoded by this gene is a cytokine that belongs to the tumor necrosis factor (TNF) ligand family. This cytokine is a ligand for receptors TNFRSF13B/TACI, TNFRSF17/BCMA, and TNFRSF13C/BAFFR. This cytokine is expressed in B cell lineage cells, and acts as a potent B cell activator. It has been also shown to play an important role in the proliferation and differentiation of B cells. Alternatively spliced transcript variants encoding distinct isoforms have been identified.

## Immunogen information

### Gene ID:

10673

### Uniprot

Q9Y275

### Synonyms:

TNFSF13B; BAFF; BLYS; CD257; DTL; TALL-1; TALL1; THANK;  
TNFSF20; TNLG7A; ZTNF4

### Immunogen:

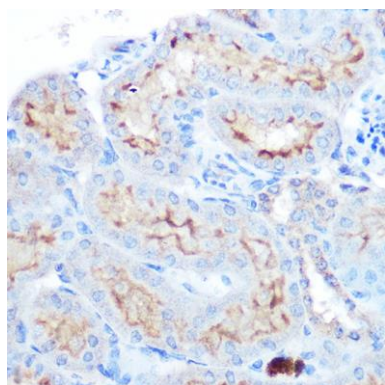
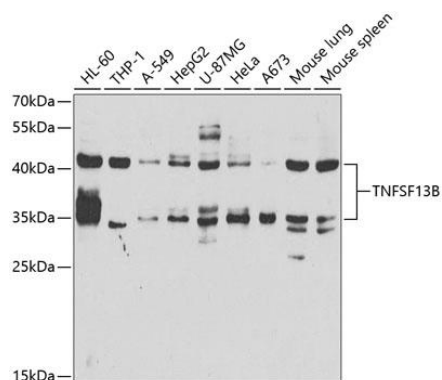
Recombinant fusion protein containing a sequence corresponding to amino acids 76-285 of human TNFSF13B (NP\_006564.1).

### Storage:

Store at -20°C. Avoid freeze / thaw cycles. Buffer: PBS with 0.02% sodium azide, 50% glycerol, pH7.3.

## Product Images

---



Western blot analysis of extracts of various cell lines, using TNFSF13B antibody (CAB5858) at 1:1000 dilution. Secondary antibody: HRP Goat Anti-Rabbit IgG (H+L) (CABS014) at 1:10000 dilution. Lysates/proteins: 25ug per lane. Blocking buffer: 3% nonfat dry milk in TBST. Detection: ECL Enhanced Kit (CABM00021). Exposure time: 20s.

Immunohistochemistry of paraffin-embedded mouse kidney using TNFSF13B Rabbit pAb (CAB5858) at dilution of 1:100 (40x lens).