

NPRL2 Rabbit Polyclonal Antibody



CAB5859

Product Information

Size:

20uL, 50uL, 100uL, 200uL

Observed MW:

40kDa

Calculated MW:

23kDa/43kDa

Applications:

WB IF

Reactivity:

Human, Mouse, Rat

Antibody Information

Recommended dilutions:

WB 1:500 - 1:2000 IF 1:50 - 1:200

Source:

Rabbit

Isotype:

IgG

Purification:

Affinity purification

Protein Background

Immunogen information

Gene ID:

10641

Uniprot

Q8WTW4

Synonyms:

NPRL2; FFEVF2; NPR2; NPR2L; TUSC4; NPR2-like

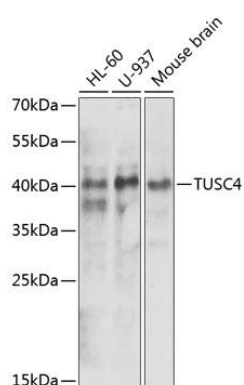
Immunogen:

Recombinant fusion protein containing a sequence corresponding to amino acids 1-220 of human NPRL2 (NP_006536.3).

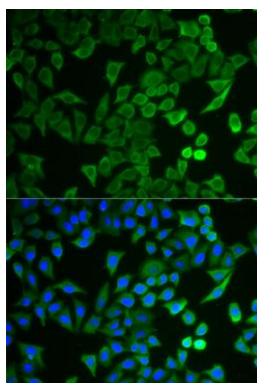
Storage:

Store at -20°C. Avoid freeze / thaw cycles. Buffer: PBS with 0.02% sodium azide, 50% glycerol, pH7.3.

Product Images



Western blot analysis of extracts of various cell lines, using NPRL2 antibody (CAB5859) at 1:1000 dilution. Secondary antibody: HRP Goat Anti-Rabbit IgG (H+L) (CABS014) at 1:10000 dilution. Lysates/proteins: 25ug per lane. Blocking buffer: 3% nonfat dry milk in TBST. Detection: ECL Enhanced Kit (CABM00021). Exposure time: 90s.



Immunofluorescence analysis of HeLa cells using NPRL2 antibody (CAB5859). Blue: DAPI for nuclear staining.