

XRCC5 Rabbit Polyclonal Antibody



CAB5862

Product Information

Size:

20uL, 50uL, 100uL, 200uL

Observed MW:

86kDa

Calculated MW:

82kDa

Applications:

WB IHC IF IP

Reactivity:

Human, Mouse, Rat

Antibody Information

Recommended dilutions:

WB 1:500 - 1:2000 IHC

1:100 - 1:200 IF 1:20 -

1:100 IP 1:50 - 1:200

Source:

Rabbit

Isotype:

IgG

Purification:

Affinity purification

Protein Background

The protein encoded by this gene is the 80-kilodalton subunit of the Ku heterodimer protein which is also known as ATP-dependant DNA helicase II or DNA repair protein XRCC5. Ku is the DNA-binding component of the DNA-dependent protein kinase, and it functions together with the DNA ligase IV-XRCC4 complex in the repair of DNA double-strand break by non-homologous end joining and the completion of V(D)J recombination events. This gene functionally complements Chinese hamster xrs-6, a mutant defective in DNA double-strand break repair and in ability to undergo V(D)J recombination. A rare microsatellite polymorphism in this gene is associated with cancer in patients of varying radiosensitivity.

Immunogen information

Gene ID:

7520

Uniprot

P13010

Synonyms:

XRCC5; KARP-1; KARP1; KU80; KUB2; Ku86; NFIV

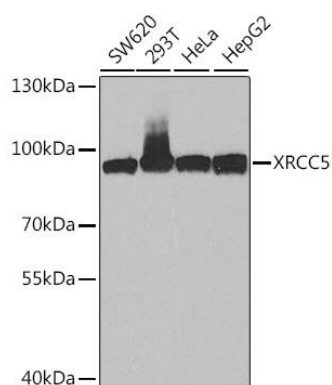
Immunogen:

Recombinant fusion protein containing a sequence corresponding to amino acids 543-732 of human XRCC5 (NP_066964.1).

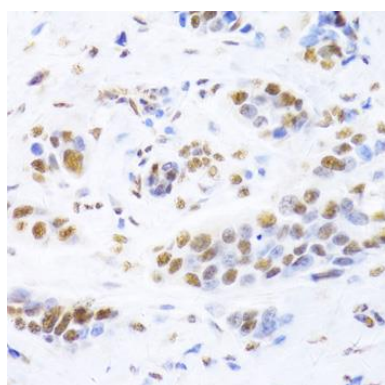
Storage:

Store at -20°C. Avoid freeze / thaw cycles. Buffer: PBS with 0.02% sodium azide, 50% glycerol, pH7.3.

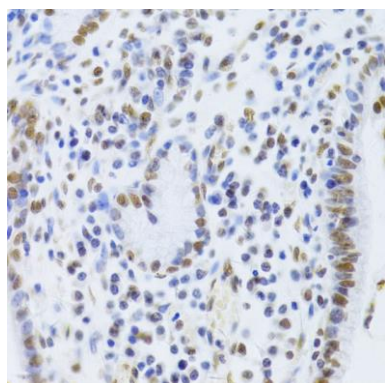
Product Images



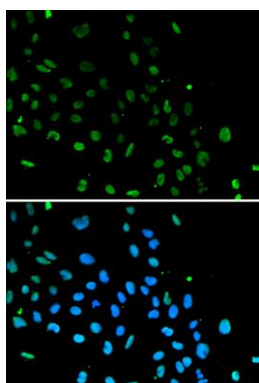
Western blot analysis of extracts of various cell lines, using XRCC5 antibody (CAB5862) at 1:1000 dilution. Secondary antibody: HRP Goat Anti-Rabbit IgG (H+L) (CABS014) at 1:10000 dilution. Lysates/proteins: 25ug per lane. Blocking buffer: 3% nonfat dry milk in TBST. Detection: ECL Basic Kit (CABM00020). Exposure time: 60s.



Immunohistochemistry of paraffin-embedded human breast cancer using XRCC5 Antibody (CAB5862) at dilution of 1:100 (40x lens).



Immunohistochemistry of paraffin-embedded human gastric cancer using XRCC5 Antibody (CAB5862) at dilution of 1:100 (40x lens).



Immunofluorescence analysis of A549 cells using XRCC5 antibody (CAB5862). Blue: DAPI for nuclear staining.