

PLZF Rabbit Polyclonal Antibody



CAB5863

Product Information

Size:

20uL, 50uL, 100uL, 200uL

Observed MW:

80kDa

Calculated MW:

61kDa/74kDa

Applications:

WB IHC

Reactivity:

Human, Mouse, Rat

Antibody Information

Recommended dilutions:

WB 1:500 - 1:1000 IHC 1:50
- 1:100

Source:

Rabbit

Isotype:

IgG

Purification:

Affinity purification

Protein Background

This gene is a member of the Krueppel C2H2-type zinc-finger protein family and encodes a zinc finger transcription factor that contains nine Kruppel-type zinc finger domains at the carboxyl terminus. This protein is located in the nucleus, is involved in cell cycle progression, and interacts with a histone deacetylase. Specific instances of aberrant gene rearrangement at this locus have been associated with acute promyelocytic leukemia (APL). Alternate transcriptional splice variants have been characterized.

Immunogen information

Gene ID:

7704

Uniprot

Q05516

Synonyms:

ZBTB16; PLZF; ZNF145

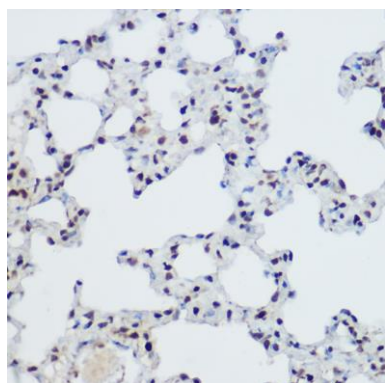
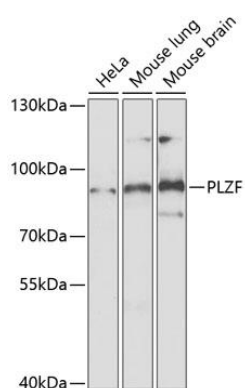
Immunogen:

Recombinant fusion protein containing a sequence corresponding to amino acids 1-220 of human PLZF (NP_001018011.1).

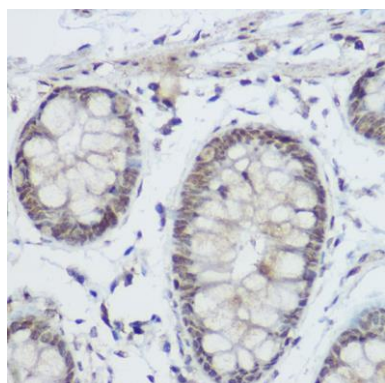
Storage:

Store at -20°C. Avoid freeze / thaw cycles. Buffer: PBS with 0.02% sodium azide, 50% glycerol, pH7.3.

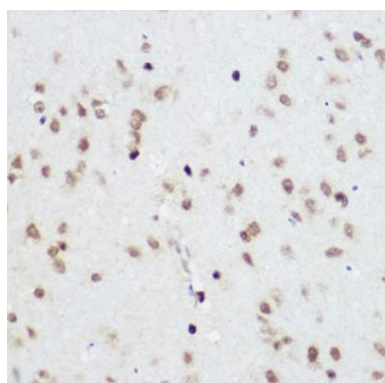
Product Images



Immunohistochemistry of paraffin-embedded Mouse lung using PLZF antibody (CAB5863) at dilution of 1:200 (40x lens).



Immunohistochemistry of paraffin-embedded Human colon using PLZF antibody (CAB5863) at dilution of 1:200 (40x lens).



Immunohistochemistry of paraffin-embedded Rat brain using PLZF antibody (CAB5863) at dilution of 1:200 (40x lens).