

TFRC Rabbit Polyclonal Antibody



CAB5865

Product Information

Size:

20uL, 50uL, 100uL, 200uL

Observed MW:

100kDa

Calculated MW:

84kDa

Applications:

WB IHC IF IP

Reactivity:

Human, Mouse, Rat

Protein Background

This gene encodes a cell surface receptor necessary for cellular iron uptake by the process of receptor-mediated endocytosis. This receptor is required for erythropoiesis and neurologic development. Multiple alternatively spliced variants have been identified.

Immunogen information

Gene ID:

7037

Uniprot

P02786

Synonyms:

TFRC; CD71; IMD46; T9; TFR; TFR1; TR; TRFR; p90

Antibody Information

Recommended dilutions:

WB 1:500 - 1:2000 IHC 1:50

- 1:200 IF 1:50 - 1:200 IP

1:50 - 1:200

Source:

Rabbit

Isotype:

IgG

Purification:

Affinity purification

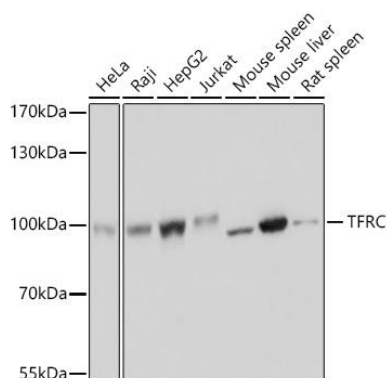
Immunogen:

Recombinant fusion protein containing a sequence corresponding to amino acids 1-140 of human TFRC (NP_001121620.1).

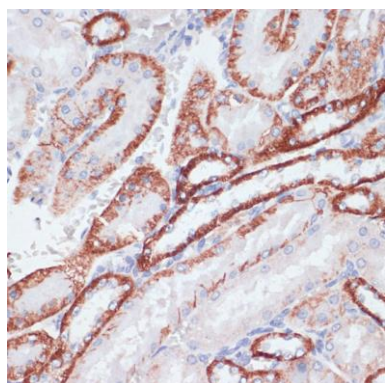
Storage:

Store at -20°C. Avoid freeze / thaw cycles. Buffer: PBS with 0.02% sodium azide, 50% glycerol, pH7.3.

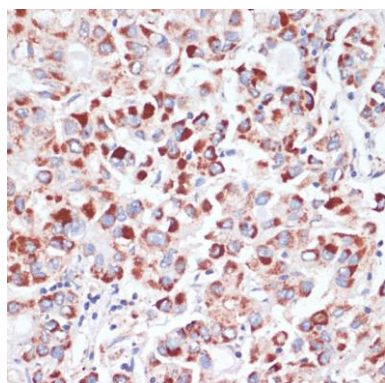
Product Images



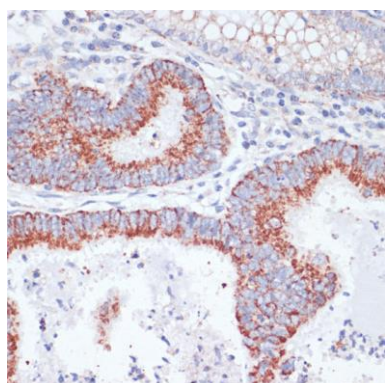
Western blot analysis of extracts of various cell lines, using TFRC antibody (CAB5865) at 1:3000 dilution. Secondary antibody: HRP Goat Anti-Rabbit IgG (H+L) (CABS014) at 1:10000 dilution. Lysates/proteins: 25ug per lane. Blocking buffer: 3% nonfat dry milk in TBST. Detection: ECL Basic Kit (CABM00020). Exposure time: 1s.



Immunohistochemistry of paraffin-embedded rat kidney using TFRC antibody (CAB5865) at dilution of 1:100 (40x lens).



Immunohistochemistry of paraffin-embedded human liver cancer using TFRC antibody (CAB5865) at dilution of 1:100 (40x lens).



Immunohistochemistry of paraffin-embedded human colon carcinoma using TFRC antibody (CAB5865) at dilution of 1:100 (40x lens).