

# Pan DiMethyl-lysine Rabbit Polyclonal Antibody



CAB5870

---

## Product Information

### Size:

20uL, 50uL, 100uL, 200uL

### Observed MW:

15-60KDa

### Calculated MW:

### Applications:

WB IHC IF IP

### Reactivity:

Human, Mouse, Rat, Other  
(Wide Range)

## Antibody Information

### Recommended dilutions:

WB 1:500 - 1:2000 IHC 1:50  
- 1:100 IF 1:50 - 1:100 IP  
1:50 - 1:100

### Source:

Rabbit

### Isotype:

IgG

### Purification:

Affinity purification

## Protein Background

### Immunogen information

#### Gene ID:

#### Uniprot

#### Synonyms:

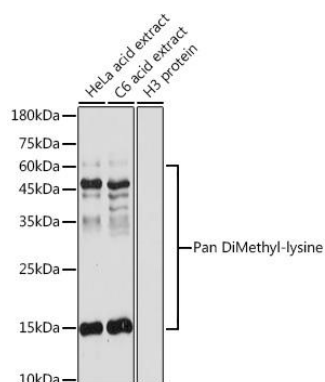
#### Immunogen:

A synthetic peptide corresponding to a sequence containing dimethylated K.

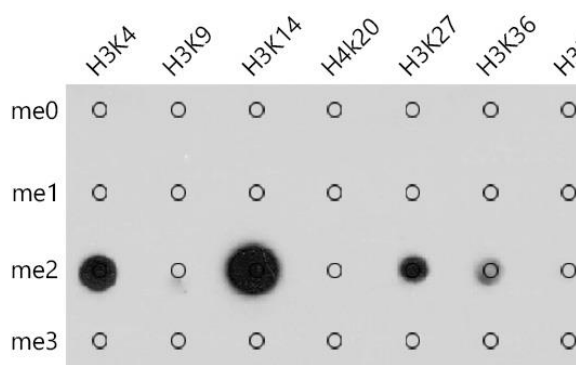
#### Storage:

Store at -20°C. Avoid freeze / thaw cycles. Buffer: PBS with 0.02% sodium azide, 50% glycerol, pH7.3.

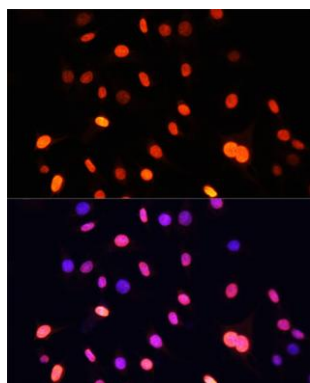
## Product Images



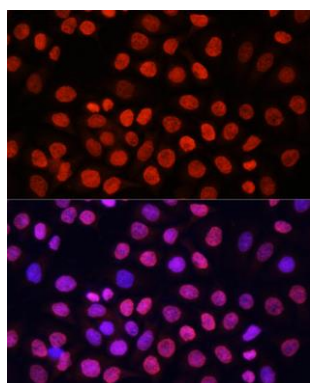
Western blot analysis of extracts of various cell lines, using Pan DiMethyl-lysine antibody (CAB5870) at 1:500 dilution. Secondary antibody: HRP Goat Anti-Rabbit IgG (H+L) (CABS014) at 1:10000 dilution. Lysates/proteins: 25ug per lane. Blocking buffer: 3% nonfat dry milk in TBST. Detection: ECL Basic Kit (CABM00020). Exposure time: 10s.



Dot-blot analysis of all sorts of methylation peptides using Pan DiMethyl-lysine antibody (CAB5870) at 1:1000 dilution.



Immunofluorescence analysis of C6 cells using Pan DiMethyl-lysine antibody (CAB5870) at dilution of 1:100. Blue: DAPI for nuclear staining.



Immunofluorescence analysis of HeLa cells using Pan DiMethyl-lysine antibody (CAB5870) at dilution of 1:100. Blue: DAPI for nuclear staining.