

CTSK Rabbit Polyclonal Antibody



CAB5871

Product Information

Size:

20uL, 50uL, 100uL

Observed MW:

37kDa

Calculated MW:

36kDa

Applications:

WB IHC

Reactivity:

Human, Mouse, Rat

Protein Background

The protein encoded by this gene is a lysosomal cysteine proteinase involved in bone remodeling and resorption. This protein, which is a member of the peptidase C1 protein family, is predominantly expressed in osteoclasts. However, the encoded protein is also expressed in a significant fraction of human breast cancers, where it could contribute to tumor invasiveness. Mutations in this gene are the cause of pycnodysostosis, an autosomal recessive disease characterized by osteosclerosis and short stature.

Immunogen information

Gene ID:

1513

Uniprot

P43235

Synonyms:

CTSK; CTS02; CTSO; CTSO1; CTSO2; PKND; PYCD

Antibody Information

Recommended dilutions:

WB 1:500 - 1:2000 IHC

1:100 - 1:200

Source:

Rabbit

Isotype:

IgG

Purification:

Affinity purification

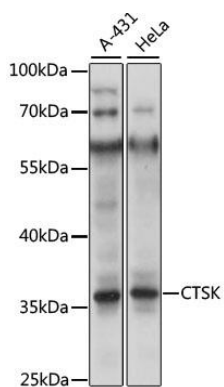
Immunogen:

Recombinant fusion protein containing a sequence corresponding to amino acids 115-329 of human CTSK (NP_000387.1).

Storage:

Store at -20°C. Avoid freeze / thaw cycles. Buffer: PBS with 0.02% sodium azide, 50% glycerol, pH7.3.

Product Images



Western blot analysis of extracts of various cell lines, using CTSK antibody (CAB5871) at 1:1000 dilution. Secondary antibody: HRP Goat Anti-Rabbit IgG (H+L) (CABS014) at 1:10000 dilution. Lysates/proteins: 25ug per lane. Blocking buffer: 3% nonfat dry milk in TBST. Detection: ECL Enhanced Kit (CABM00021). Exposure time: 3s.