

FBXW7 Rabbit Polyclonal Antibody



CAB5872

Product Information

Size:

20uL, 50uL, 100uL, 200uL

Observed MW:

80kDa

Calculated MW:

66kDa/70kDa/79kDa

Applications:

WB IHC IF

Reactivity:

Human, Mouse, Rat

Antibody Information

Recommended dilutions:

WB 1:500 - 1:2000 IHC 1:50
- 1:200 IF 1:50 - 1:200

Source:

Rabbit

Isotype:

IgG

Purification:

Affinity purification

Protein Background

This gene encodes a member of the F-box protein family which is characterized by an approximately 40 amino acid motif, the F-box. The F-box proteins constitute one of the four subunits of ubiquitin protein ligase complex called SCFs (SKP1-cullin-F-box), which function in phosphorylation-dependent ubiquitination. The F-box proteins are divided into 3 classes: Fbws containing WD-40 domains, Fbls containing leucine-rich repeats, and Fbxs containing either different protein-protein interaction modules or no recognizable motifs. The protein encoded by this gene was previously referred to as FBX30, and belongs to the Fbws class; in addition to an F-box, this protein contains 7 tandem WD40 repeats. This protein binds directly to cyclin E and probably targets cyclin E for ubiquitin-mediated degradation. Mutations in this gene are detected in ovarian and breast cancer cell lines, implicating the gene's potential role in the pathogenesis of human cancers. Multiple transcript variants encoding different isoforms have been found for this gene.

Immunogen information

Gene ID:

55294

Uniprot

Q969H0

Synonyms:

FBXW7; AGO; CDC4; FBW6; FBW7; FBX30; FBXO30; FBXW6; SEL-10;
SEL10; hAgo; hCdc4

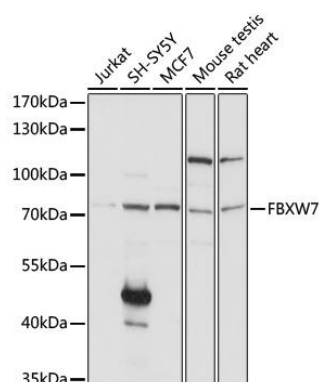
Immunogen:

Recombinant fusion protein containing a sequence corresponding to amino acids 408-707 of human FBXW7 (NP_361014.1).

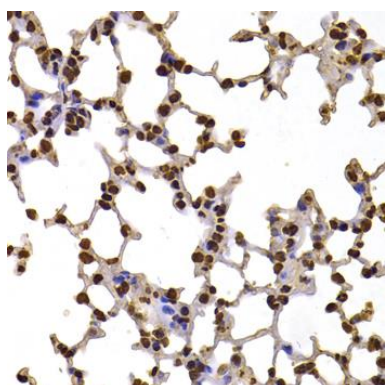
Storage:

Store at -20°C. Avoid freeze / thaw cycles. Buffer: PBS with 0.02% sodium azide, 50% glycerol, pH7.3.

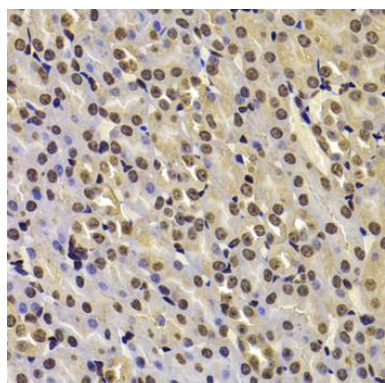
Product Images



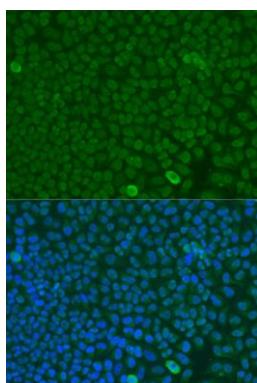
Western blot analysis of extracts of various cell lines, using FBXW7 antibody (CAB5872) at 1:1000 dilution. Secondary antibody: HRP Goat Anti-Rabbit IgG (H+L) (CABS014) at 1:10000 dilution. Lysates/proteins: 25ug per lane. Blocking buffer: 3% nonfat dry milk in TBST. Detection: ECL Basic Kit (CABM00020). Exposure time: 1s.



Immunohistochemistry of paraffin-embedded mouse lung using FBXW7 antibody (CAB5872) at dilution of 1:100 (40x lens).



Immunohistochemistry of paraffin-embedded mouse kidney using FBXW7 antibody (CAB5872) at dilution of 1:100 (40x lens).



Immunofluorescence analysis of U2OS cells using FBXW7 antibody (CAB5872) at dilution of 1:100. Blue: DAPI for nuclear staining.