

# SF3B2 Rabbit Polyclonal Antibody



CAB5875

## Product Information

### Size:

20uL, 50uL, 100uL, 200uL

### Observed MW:

140kDa

### Calculated MW:

100kDa

### Applications:

WB IHC IF

### Reactivity:

Human, Mouse, Rat

## Antibody Information

### Recommended dilutions:

WB 1:500 - 1:2000 IHC 1:50  
- 1:200 IF 1:50 - 1:200

### Source:

Rabbit

### Isotype:

IgG

### Purification:

Affinity purification

## Protein Background

This gene encodes subunit 2 of the splicing factor 3b protein complex. Splicing factor 3b, together with splicing factor 3a and a 12S RNA unit, forms the U2 small nuclear ribonucleoproteins complex (U2 snRNP). The splicing factor 3b/3a complex binds pre-mRNA upstream of the intron's branch site in a sequence-independent manner and may anchor the U2 snRNP to the pre-mRNA. Splicing factor 3b is also a component of the minor U12-type spliceosome. Subunit 2 associates with pre-mRNA upstream of the branch site at the anchoring site. Subunit 2 also interacts directly with subunit 4 of the splicing factor 3b complex. Subunit 2 is a highly hydrophilic protein with a proline-rich N-terminus and a glutamate-rich stretch in the C-terminus.

## Immunogen information

### Gene ID:

10992

### Uniprot

Q13435

### Synonyms:

SF3B2; Cus1; SAP145; SF3B145; SF3b1; SF3b150

### Immunogen:

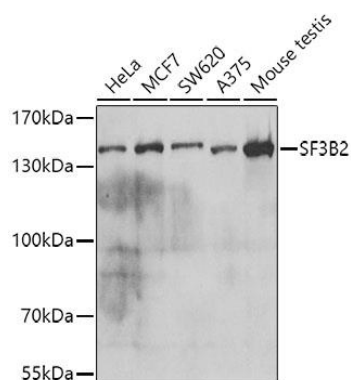
Recombinant fusion protein containing a sequence corresponding to amino acids 616-895 of human SF3B2 (NP\_006833.2).

### Storage:

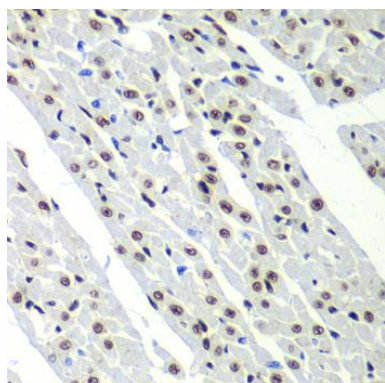
Store at -20°C. Avoid freeze / thaw cycles. Buffer: PBS with 0.02% sodium azide, 50% glycerol, pH7.3.

## Product Images

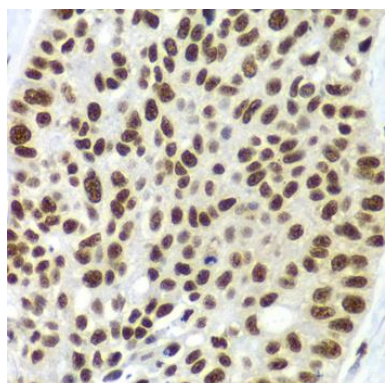
---



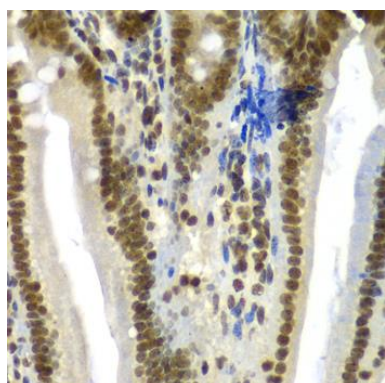
Western blot analysis of extracts of various cell lines, using SF3B2 antibody (CAB5875) at 1:1000 dilution. Secondary antibody: HRP Goat Anti-Rabbit IgG (H+L) (CABS014) at 1:10000 dilution. Lysates/proteins: 25ug per lane. Blocking buffer: 3% nonfat dry milk in TBST. Detection: ECL Basic Kit (CABM00020). Exposure time: 5s.



Immunohistochemistry of paraffin-embedded rat heart using SF3B2 antibody (CAB5875) at dilution of 1:100 (40x lens).



Immunohistochemistry of paraffin-embedded human lung cancer using SF3B2 antibody (CAB5875) at dilution of 1:100 (40x lens).



Immunohistochemistry of paraffin-embedded mouse Intestine using SF3B2 antibody (CAB5875) at dilution of 1:100 (40x lens).