

KTN1 Rabbit Polyclonal Antibody



CAB5879

Product Information

Size:

20uL, 50uL, 100uL, 200uL

Observed MW:

166kDa

Calculated MW:

149kDa/150kDa/152kDa/156kDa

Applications:

WB IHC

Reactivity:

Human

Antibody Information

Recommended dilutions:

WB 1:500 - 1:2000 IHC 1:50 - 1:200

Source:

Rabbit

Isotype:

IgG

Purification:

Affinity purification

Protein Background

This gene encodes an integral membrane protein that is a member of the kinectin protein family. The encoded protein is primarily localized to the endoplasmic reticulum membrane. This protein binds kinesin and may be involved in intracellular organelle motility. This protein also binds translation elongation factor-delta and may be involved in the assembly of the elongation factor-1 complex. Alternate splicing results in multiple transcript variants of this gene.

Immunogen information

Gene ID:

3895

Uniprot

Q86UP2

Synonyms:

KTN1; CG1; KNT; MU-RMS-40.19; kinectin

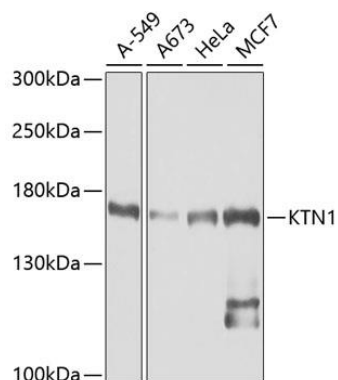
Immunogen:

A synthetic peptide corresponding to a sequence within amino acids 1-100 of human KTN1 (NP_001072989.1).

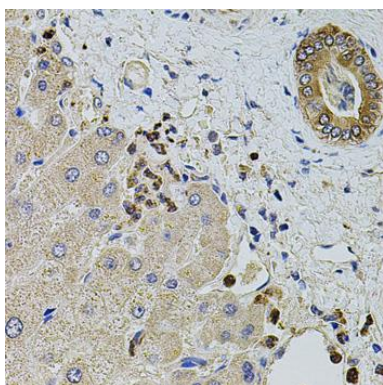
Storage:

Store at -20°C. Avoid freeze / thaw cycles. Buffer: PBS with 0.02% sodium azide, 50% glycerol, pH7.3.

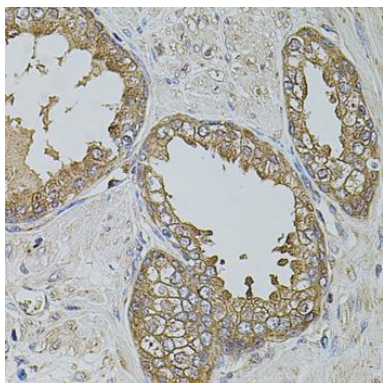
Product Images



Western blot analysis of extracts of various cell lines, using KTN1 antibody (CAB5879) at 1:1000 dilution. Secondary antibody: HRP Goat Anti-Rabbit IgG (H+L) (CABS014) at 1:10000 dilution. Lysates/proteins: 25ug per lane. Blocking buffer: 3% nonfat dry milk in TBST. Detection: ECL Basic Kit (CABM00020). Exposure time: 90s.



Immunohistochemistry of paraffin-embedded human liver damage using KTN1 antibody (CAB5879) at dilution of 1:100 (40x lens).



Immunohistochemistry of paraffin-embedded human prostate using KTN1 antibody (CAB5879) at dilution of 1:100 (40x lens).