

# RPS10 Rabbit Polyclonal Antibody



CAB5880

## Product Information

### Size:

20uL, 50uL, 100uL, 200uL

### Observed MW:

19kDa

### Calculated MW:

18kDa

### Applications:

WB IHC IF IP

### Reactivity:

Human, Mouse, Rat

## Antibody Information

### Recommended dilutions:

WB 1:500 - 1:2000 IHC 1:50  
- 1:200 IF 1:20 - 1:50 IP  
1:20 - 1:50

### Source:

Rabbit

### Isotype:

IgG

### Purification:

Affinity purification

## Protein Background

Ribosomes, the organelles that catalyze protein synthesis, consist of a small 40S subunit and a large 60S subunit. Together these subunits are composed of 4 RNA species and approximately 80 structurally distinct proteins. This gene encodes a ribosomal protein that is a component of the 40S subunit. The protein belongs to the S10E family of ribosomal proteins. It is located in the cytoplasm. Variable expression of this gene in colorectal cancers compared to adjacent normal tissues has been observed, although no correlation between the level of expression and the severity of the disease has been found. As is typical for genes encoding ribosomal proteins, there are multiple processed pseudogenes of this gene dispersed through the genome. Alternate splicing results in multiple transcript variants that encode the same protein. Naturally occurring read-through transcription occurs between this locus and the neighboring locus NUDT3 (nucleoside diphosphate linked moiety X)-type motif 3).

## Immunogen information

### Gene ID:

6204

### Uniprot

P46783

### Synonyms:

RPS10; DBA9; S10; RPS10

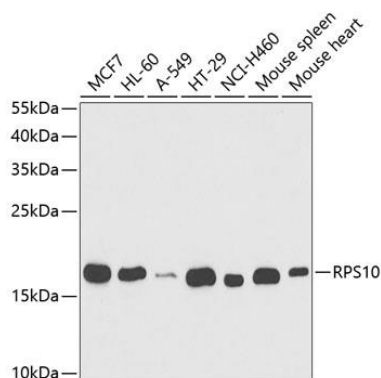
### Immunogen:

Recombinant fusion protein containing a sequence corresponding to amino acids 1-165 of human RPS10 (NP\_001190174.1).

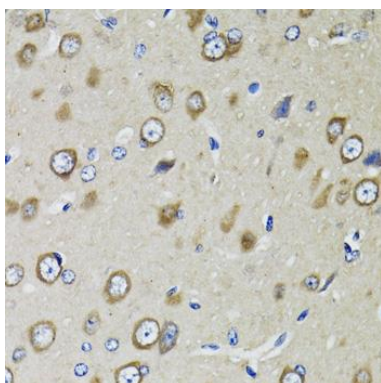
### Storage:

Store at -20°C. Avoid freeze / thaw cycles. Buffer: PBS with 0.02% sodium azide, 50% glycerol, pH7.3.

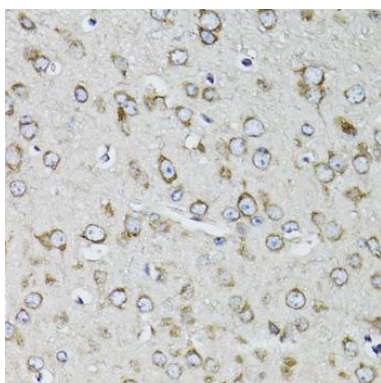
## Product Images



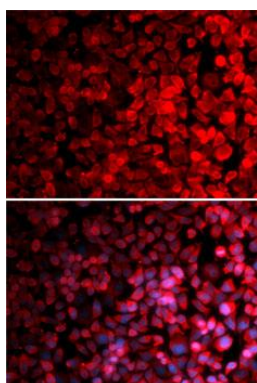
Western blot analysis of extracts of various cell lines, using RPS10 antibody (CAB5880) at 1:1000 dilution. Secondary antibody: HRP Goat Anti-Rabbit IgG (H+L) (CABS014) at 1:10000 dilution. Lysates/proteins: 25ug per lane. Blocking buffer: 3% nonfat dry milk in TBST. Detection: ECL Basic Kit (CABM00020). Exposure time: 10s.



Immunohistochemistry of paraffin-embedded rat brain using RPS10 antibody (CAB5880) at dilution of 1:100 (40x lens).



Immunohistochemistry of paraffin-embedded mouse brain using RPS10 antibody (CAB5880) at dilution of 1:100 (40x lens).



Immunofluorescence analysis of MCF7 cells using RPS10 antibody (CAB5880). Blue: DAPI for nuclear staining.