

# APEH Rabbit Polyclonal Antibody



CAB5893

## Product Information

### Size:

20uL, 50uL, 100uL, 200uL

### Observed MW:

81kDa

### Calculated MW:

81kDa

### Applications:

WB IP

### Reactivity:

Human, Mouse, Rat

## Antibody Information

### Recommended dilutions:

WB 1:500 - 1:2000 IP 1:20 - 1:50

### Source:

Rabbit

### Isotype:

IgG

### Purification:

Affinity purification

## Protein Background

This gene encodes the enzyme acylpeptide hydrolase, which catalyzes the hydrolysis of the terminal acetylated amino acid preferentially from small acetylated peptides. The acetyl amino acid formed by this hydrolase is further processed to acetate and a free amino acid by an aminoacylase. This gene is located within the same region of chromosome 3 (3p21) as the aminoacylase gene, and deletions at this locus are also associated with a decrease in aminoacylase activity. The acylpeptide hydrolase is a homotetrameric protein of 300 kDa with each subunit consisting of 732 amino acid residues. It can play an important role in destroying oxidatively damaged proteins in living cells. Deletions of this gene locus are found in various types of carcinomas, including small cell lung carcinoma and renal cell carcinoma.

## Immunogen information

### Gene ID:

327

### Uniprot

P13798

### Synonyms:

APEH; AARE; ACPH; APH; D3F15S2; D3S48E; DNF15S2; OPH

### Immunogen:

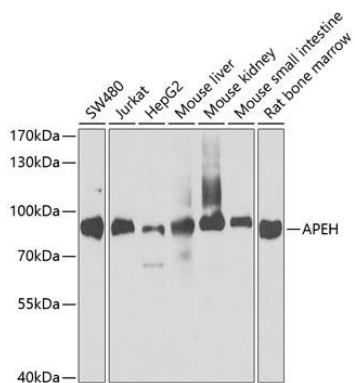
Recombinant fusion protein containing a sequence corresponding to amino acids 1-260 of human APEH (NP\_001631.3).

### Storage:

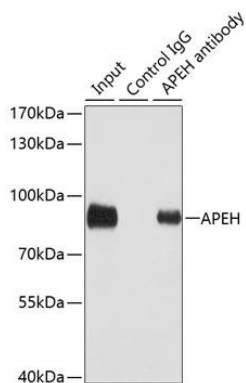
Store at -20°C. Avoid freeze / thaw cycles. Buffer: PBS with 0.02% sodium azide, 50% glycerol, pH7.3.

## Product Images

---



Western blot analysis of extracts of various cell lines, using APEH antibody (CAB5893) at 1:1000 dilution. Secondary antibody: HRP Goat Anti-Rabbit IgG (H+L) (CABS014) at 1:10000 dilution. Lysates/proteins: 25ug per lane. Blocking buffer: 3% nonfat dry milk in TBST. Detection: ECL Basic Kit (CABM00020). Exposure time: 30s.



Immunoprecipitation analysis of 100ug extracts of SW480 cells using 3ug APEH antibody (CAB5893). Western blot was performed from the immunoprecipitate using APEH antibody (CAB5893) at a dilution of 1:1000.