

NCL Rabbit Polyclonal Antibody



CAB5904

Product Information

Size:

20uL, 50uL, 100uL, 200uL

Observed MW:

110kDa

Calculated MW:

76kDa

Applications:

WB IHC IF

Reactivity:

Human, Mouse

Protein Background

Nucleolin (NCL), a eukaryotic nucleolar phosphoprotein, is involved in the synthesis and maturation of ribosomes. It is located mainly in dense fibrillar regions of the nucleolus. Human NCL gene consists of 14 exons with 13 introns and spans approximately 11kb. The intron 11 of the NCL gene encodes a small nucleolar RNA, termed U20.

Immunogen information

Gene ID:

4691

Uniprot

P19338

Synonyms:

NCL; C23; Nsr1; nucleolin

Antibody Information

Recommended dilutions:

WB 1:500 - 1:2000 IHC 1:50
- 1:200 IF 1:50 - 1:200

Source:

Rabbit

Isotype:

IgG

Purification:

Affinity purification

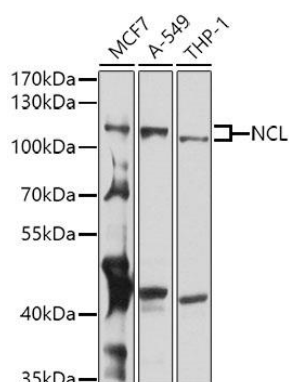
Immunogen:

Recombinant fusion protein containing a sequence corresponding to amino acids 461-710 of human NCL (NP_005372.2).

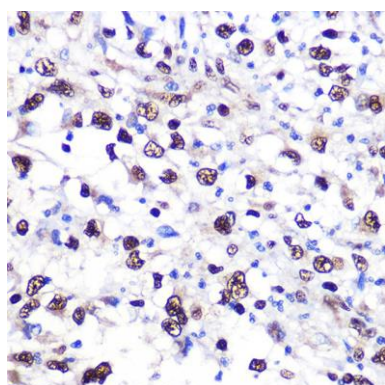
Storage:

Store at -20°C. Avoid freeze / thaw cycles. Buffer: PBS with 0.02% sodium azide, 50% glycerol, pH7.3.

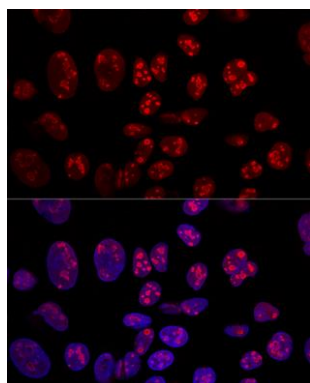
Product Images



Western blot analysis of extracts of various cell lines, using NCL antibody (CAB5904) at 1:1000 dilution. Secondary antibody: HRP Goat Anti-Rabbit IgG (H+L) (CABS014) at 1:10000 dilution. Lysates/proteins: 25ug per lane. Blocking buffer: 3% nonfat dry milk in TBST. Detection: ECL Basic Kit (CABM00020). Exposure time: 30s.



Immunohistochemistry of paraffin-embedded human liver cancer using NCL Rabbit pAb (CAB5904) at dilution of 1:100 (40x lens).



Confocal immunofluorescence analysis of U2OS cells using NCL Polyclonal Antibody (CAB5904) at dilution of 1:100. Blue: DAPI for nuclear staining.