

EIF1AX Rabbit Polyclonal Antibody



CAB5917

Product Information

Size:

20uL, 50uL, 100uL, 200uL

Observed MW:

16kDa

Calculated MW:

16kDa

Applications:

WB IHC IF

Reactivity:

Human, Mouse, Rat

Protein Background

This gene encodes an essential eukaryotic translation initiation factor. The protein is required for the binding of the 43S complex (a 40S subunit, eIF2/GTP/Met-tRNAⁱ and eIF3) to the 5' end of capped RNA.

Immunogen information

Gene ID:

1964

Uniprot

P47813

Synonyms:

EIF1AX; EIF1A; EIF1AP1; EIF4C; eIF-1A; eIF-4C; X-linked

Antibody Information

Recommended dilutions:

WB 1:200 - 1:2000 IHC

1:100 - 1:200 IF 1:50 -

1:200

Source:

Rabbit

Isotype:

IgG

Purification:

Affinity purification

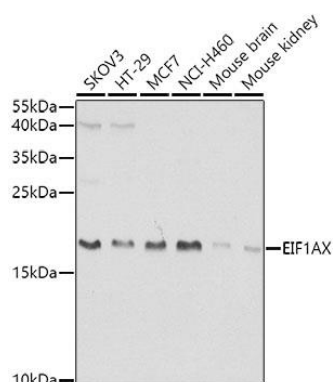
Immunogen:

Recombinant fusion protein containing a sequence corresponding to amino acids 10-144 of human EIF1AX (NP_001403.1).

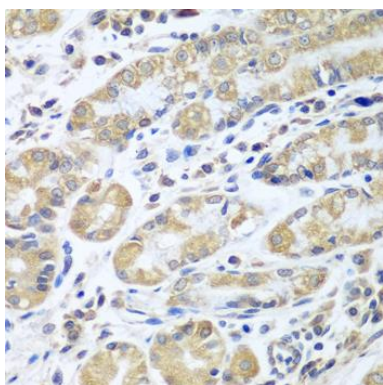
Storage:

Store at -20°C. Avoid freeze / thaw cycles. Buffer: PBS with 0.02% sodium azide, 50% glycerol, pH7.3.

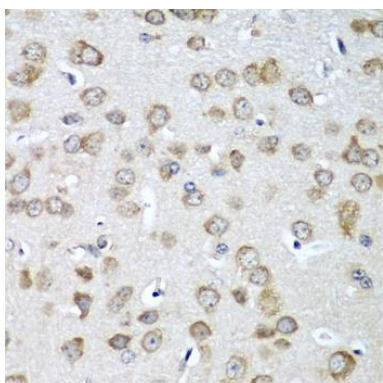
Product Images



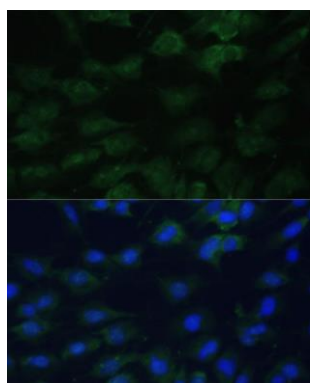
Western blot analysis of extracts of various cell lines, using EIF1AX antibody (CAB5917) at 1:1000 dilution. Secondary antibody: HRP Goat Anti-Rabbit IgG (H+L) (CABS014) at 1:10000 dilution. Lysates/proteins: 25ug per lane. Blocking buffer: 3% nonfat dry milk in TBST. Detection: ECL Basic Kit (CABM00020). Exposure time: 30s.



Immunohistochemistry of paraffin-embedded human stomach using EIF1AX antibody (CAB5917) at dilution of 1:100 (40x lens).



Immunohistochemistry of paraffin-embedded mouse brain using EIF1AX antibody (CAB5917) at dilution of 1:100 (40x lens).



Immunofluorescence analysis of C6 cells using EIF1AX Polyclonal Antibody (CAB5917) at dilution of 1:100 (40x lens). Blue: DAPI for nuclear staining.