

RPL17 Rabbit Polyclonal Antibody



CAB5934

Product Information

Size:

20uL, 50uL, 100uL, 200uL

Observed MW:

21kDa

Calculated MW:

17kDa/21kDa/26kDa

Applications:

WB IHC IF

Reactivity:

Human, Mouse, Rat

Antibody Information

Recommended dilutions:

WB 1:200 - 1:2000 IHC 1:50
- 1:200 IF 1:50 - 1:200

Source:

Rabbit

Isotype:

IgG

Purification:

Affinity purification

Protein Background

Ribosomes, the organelles that catalyze protein synthesis, consist of a small 40S subunit and a large 60S subunit. Together these subunits are composed of 4 RNA species and approximately 80 structurally distinct proteins. This gene encodes a ribosomal protein that is a component of the 60S subunit. The protein belongs to the L22P family of ribosomal proteins. It is located in the cytoplasm. This gene has been referred to as rpl23 because the encoded protein shares amino acid identity with ribosomal protein L23 from *Halobacterium marismortui*; however, its official symbol is RPL17. As is typical for genes encoding ribosomal proteins, there are multiple processed pseudogenes of this gene dispersed through the genome. Alternative splicing results in multiple transcript variants. Read-through transcription also exists between this gene and the neighboring downstream C18orf32 (chromosome 18 open reading frame 32) gene.

Immunogen information

Gene ID:

6139

Uniprot

P18621

Synonyms:

RPL17; L17; PD-1; RPL23

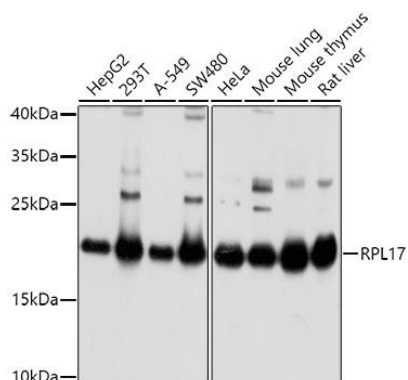
Immunogen:

Recombinant fusion protein containing a sequence corresponding to amino acids 1-184 of human RPL17 (NP_000976.1).

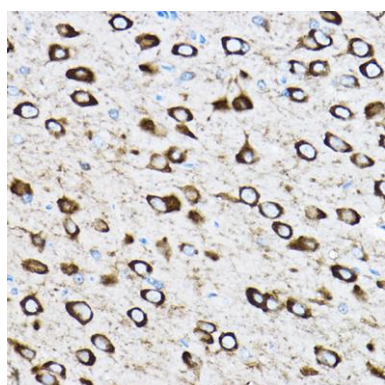
Storage:

Store at -20°C. Avoid freeze / thaw cycles. Buffer: PBS with 0.02% sodium azide, 50% glycerol, pH7.3.

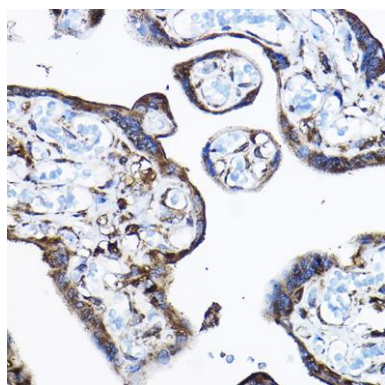
Product Images



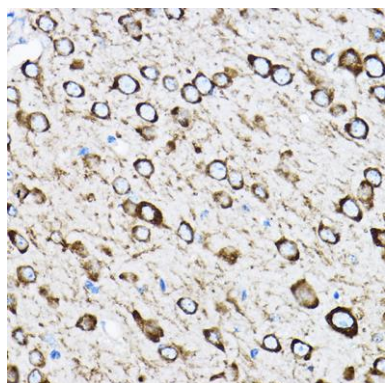
Western blot analysis of extracts of various cell lines, using RPL17 antibody (CAB5934) at 1:1000 dilution. Secondary antibody: HRP Goat Anti-Rabbit IgG (H+L) (CABS014) at 1:10000 dilution. Lysates/proteins: 25ug per lane. Blocking buffer: 3% nonfat dry milk in TBST. Detection: ECL Basic Kit (CABM00020). Exposure time: 5s.



Immunohistochemistry of paraffin-embedded rat brain using RPL17 Rabbit pAb (CAB5934) at dilution of 1:100 (40x lens).



Immunohistochemistry of paraffin-embedded human placenta using RPL17 Rabbit pAb (CAB5934) at dilution of 1:100 (40x lens).



Immunohistochemistry of paraffin-embedded mouse brain using RPL17 Rabbit pAb (CAB5934) at dilution of 1:100 (40x lens).