

[KO Validated] CSDE1 Rabbit Polyclonal Antibody



CAB5941

Product Information

Size:

20uL, 50uL, 100uL, 200uL

Observed MW:

89KDa

Calculated MW:

85kDa/88kDa/90kDa/93kDa

Applications:

WB IF IP

Reactivity:

Human, Mouse

Antibody Information

Recommended dilutions:

WB 1:500 - 1:2000 IF 1:50 -
1:200 IP 1:20 - 1:50

Source:

Rabbit

Isotype:

IgG

Purification:

Affinity purification

Protein Background

Immunogen information

Gene ID:

7812

Uniprot

O75534

Synonyms:

CSDE1; D1S155E; UNR

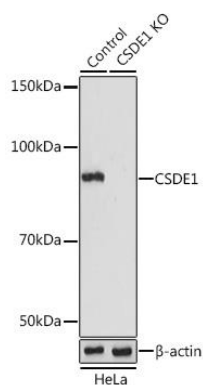
Immunogen:

Recombinant fusion protein containing a sequence corresponding to amino acids 369-600 of human CSDE1 (NP_009089.4).

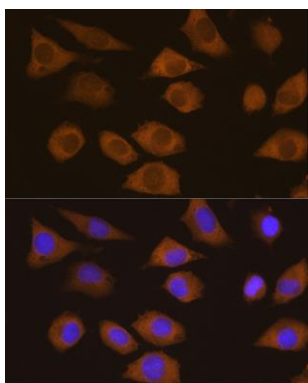
Storage:

Store at -20°C. Avoid freeze / thaw cycles. Buffer: PBS with 0.02% sodium azide, 50% glycerol, pH7.3.

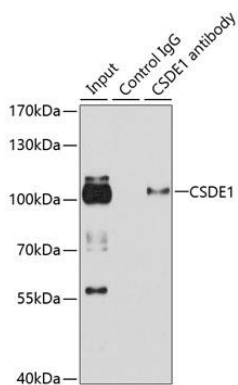
Product Images



Western blot analysis of extracts from normal (control) and CSDE1 knockout (KO) HeLa cells, using CSDE1 antibody (CAB5941) at 1:1000 dilution. Secondary antibody: HRP Goat Anti-Rabbit IgG (H+L) (CABS014) at 1:10000 dilution. Lysates/proteins: 25ug per lane. Blocking buffer: 3% nonfat dry milk in TBST. Detection: ECL Basic Kit (CABM00020). Exposure time: 15s.



Immunofluorescence analysis of L929 cells using CSDE1 Rabbit pAb (CAB5941) at dilution of 1:100. Blue: DAPI for nuclear staining.



Immunoprecipitation analysis of 100ug extracts of HeLa cells using 3ug CSDE1 antibody (CAB5941). Western blot was performed from the immunoprecipitate using CSDE1 antibody (CAB5941) at a dilution of 1:1000.