

# EIF3D Rabbit Polyclonal Antibody



CAB5947

## Product Information

### Size:

20uL, 50uL, 100uL, 200uL

### Observed MW:

64kDa

### Calculated MW:

58kDa/62kDa/63kDa

### Applications:

WB IHC IF

### Reactivity:

Human, Mouse, Rat

## Protein Background

Eukaryotic translation initiation factor-3 (eIF3), the largest of the eIFs, is a multiprotein complex composed of at least ten nonidentical subunits. The complex binds to the 40S ribosome and helps maintain the 40S and 60S ribosomal subunits in a dissociated state. It is also thought to play a role in the formation of the 40S initiation complex by interacting with the ternary complex of eIF2/GTP/methionyl-tRNA, and by promoting mRNA binding. The protein encoded by this gene is the major RNA binding subunit of the eIF3 complex.

## Immunogen information

### Gene ID:

8664

### Uniprot

O15371

### Synonyms:

EIF3D; EIF3S7; eIF3-p66; eIF3-zeta

## Antibody Information

### Recommended dilutions:

WB 1:200 - 1:2000 IHC 1:50  
- 1:200 IF 1:50 - 1:200

### Source:

Rabbit

### Isotype:

IgG

### Purification:

Affinity purification

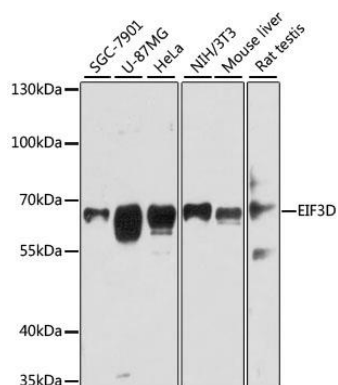
### Immunogen:

Recombinant fusion protein containing a sequence corresponding to amino acids 1-240 of human EIF3D (NP\_003744.1).

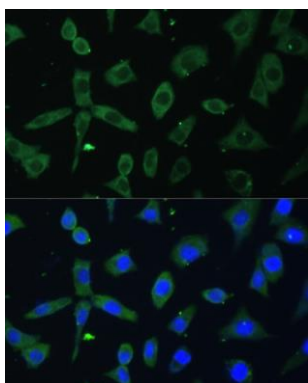
### Storage:

Store at -20°C. Avoid freeze / thaw cycles. Buffer: PBS with 0.02% sodium azide, 50% glycerol, pH7.3.

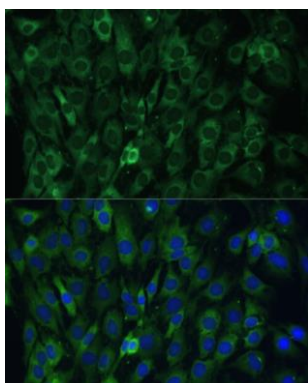
## Product Images



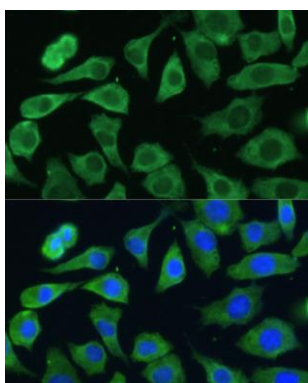
Western blot analysis of extracts of various cell lines, using EIF3D antibody (CAB5947) at 1:3000 dilution. Secondary antibody: HRP Goat Anti-Rabbit IgG (H+L) (CABS014) at 1:10000 dilution. Lysates/proteins: 25ug per lane. Blocking buffer: 3% nonfat dry milk in TBST. Detection: ECL Basic Kit (CABM00020). Exposure time: 30s.



Immunofluorescence analysis of L-929 cells using EIF3D antibody (CAB5947) at dilution of 1:100. Blue: DAPI for nuclear staining.



Immunofluorescence analysis of C6 cells using EIF3D antibody (CAB5947) at dilution of 1:100. Blue: DAPI for nuclear staining.



Immunofluorescence analysis of L-929 cells using EIF3D antibody (CAB5947) at dilution of 1:100. Blue: DAPI for nuclear staining.