

CELF1 Rabbit Polyclonal Antibody



CAB5958

Product Information

Size:

20uL, 50uL, 100uL, 200uL

Observed MW:

52kDa

Calculated MW:

50kDa/51kDa/52kDa/55kDa

Applications:

WB IHC

Reactivity:

Human, Mouse, Rat

Antibody Information

Recommended dilutions:

WB 1:200 - 1:2000 IHC 1:50
- 1:200

Source:

Rabbit

Isotype:

IgG

Purification:

Affinity purification

Protein Background

Members of the CELF/BRUNOL protein family contain two N-terminal RNA recognition motif (RRM) domains, one C-terminal RRM domain, and a divergent segment of 160-230 aa between the second and third RRM domains. Members of this protein family regulate pre-mRNA alternative splicing and may also be involved in mRNA editing, and translation. This gene may play a role in myotonic dystrophy type 1 (DM1) via interactions with the dystrophia myotonica-protein kinase (DMPK) gene. Alternative splicing results in multiple transcript variants encoding different isoforms.

Immunogen information

Gene ID:

10658

Uniprot

Q92879

Synonyms:

CELF1; BRUNOL2; CUG-BP; CUGBP; CUGBP1; EDEN-BP; NAB50;
NAPOR; hNab50

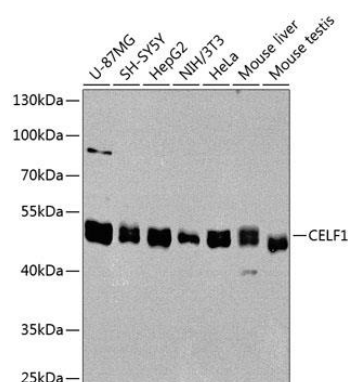
Immunogen:

Recombinant fusion protein containing a sequence corresponding to amino acids 108-483 of human CELF1 (NP_941989.1).

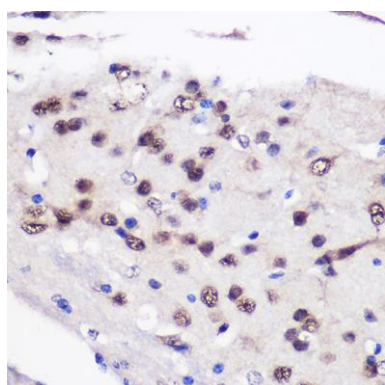
Storage:

Store at -20°C. Avoid freeze / thaw cycles. Buffer: PBS with 0.02% sodium azide, 50% glycerol, pH7.3.

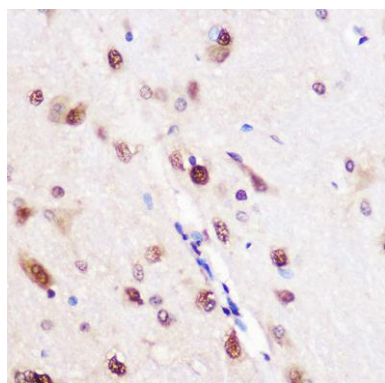
Product Images



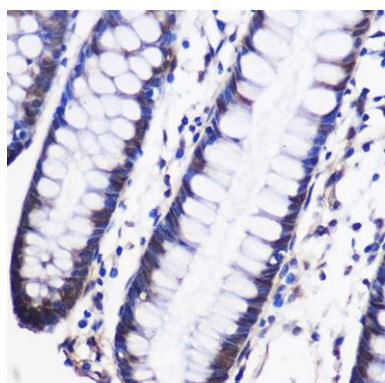
Western blot analysis of extracts of various cell lines, using CELF1 antibody (CAB5958) at 1:1000 dilution. Secondary antibody: HRP Goat Anti-Rabbit IgG (H+L) (CABS014) at 1:10000 dilution. Lysates/proteins: 25ug per lane. Blocking buffer: 3% nonfat dry milk in TBST. Detection: ECL Basic Kit (CABM00020). Exposure time: 60s.



Immunohistochemistry of paraffin-embedded Mouse brain using CELF1 Rabbit pAb (CAB5958) at dilution of 1:100 (40x lens).



Immunohistochemistry of paraffin-embedded Rat brain using CELF1 Rabbit pAb (CAB5958) at dilution of 1:100 (40x lens).



Immunohistochemistry of paraffin-embedded Human colon using CELF1 Rabbit pAb (CAB5958) at dilution of 1:100 (40x lens).