

# ZCCHC11 Rabbit Polyclonal Antibody



CAB5972

---

## Product Information

### Size:

20uL, 50uL, 100uL, 200uL

### Observed MW:

185kDa

### Calculated MW:

81kDa/185kDa

### Applications:

WB IF

### Reactivity:

Human, Mouse, Rat

## Antibody Information

### Recommended dilutions:

WB 1:500 - 1:1000 IF 1:50 - 1:200

### Source:

Rabbit

### Isotype:

IgG

### Purification:

Affinity purification

## Protein Background

### Immunogen information

#### Gene ID:

23318

#### Uniprot

Q5TAX3

#### Synonyms:

ZCCHC11; PAPD3; TUT4

#### Immunogen:

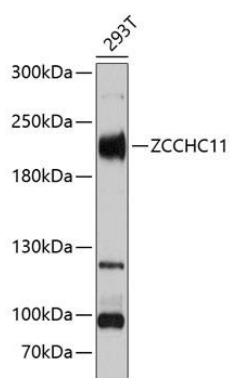
Recombinant fusion protein containing a sequence corresponding to amino acids 1-290 of human ZCCHC11 (NP\_001009881.1).

#### Storage:

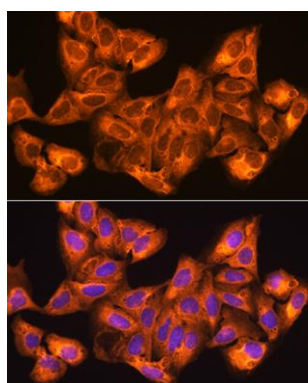
Store at -20°C. Avoid freeze / thaw cycles. Buffer: PBS with 0.02% sodium azide, 50% glycerol, pH7.3.

## Product Images

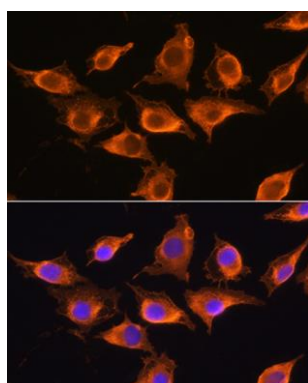
---



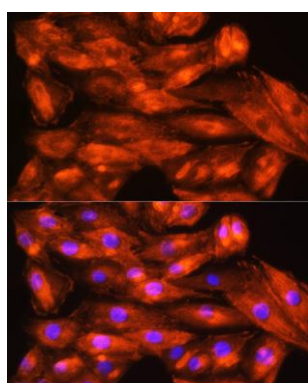
Western blot analysis of extracts of 293T cells, using ZCCHC11 Antibody (CAB5972) at 1:3000 dilution. Secondary antibody: HRP Goat Anti-Rabbit IgG (H+L) (CABS014) at 1:10000 dilution. Lysates/proteins: 25ug per lane. Blocking buffer: 3% nonfat dry milk in TBST. Detection: ECL Basic Kit (CABM00020). Exposure time: 20s.



Immunofluorescence analysis of U2OS cells using ZCCHC11 Rabbit pAb (CAB5972) at dilution of 1:100. Blue: DAPI for nuclear staining.



Immunofluorescence analysis of L929 cells using ZCCHC11 Rabbit pAb (CAB5972) at dilution of 1:100. Blue: DAPI for nuclear staining.



Immunofluorescence analysis of H9C2 cells using ZCCHC11 Rabbit pAb (CAB5972) at dilution of 1:100. Blue: DAPI for nuclear staining.