

YTHDF1 Rabbit Polyclonal Antibody



CAB5985

Product Information

Size:

50uL, 100uL

Observed MW:

61kDa

Calculated MW:

20kDa/60kDa

Applications:

WB IHC IP

Reactivity:

Human, Mouse, Rat

Antibody Information

Recommended dilutions:

WB 1:500 - 1:2000 IHC 1:50
- 1:200 IP 1:20 - 1:50

Source:

Rabbit

Isotype:

IgG

Purification:

Affinity purification

Protein Background

Immunogen information

Gene ID:

54915

Uniprot

Q9BYJ9

Synonyms:

YTHDF1; C20orf21

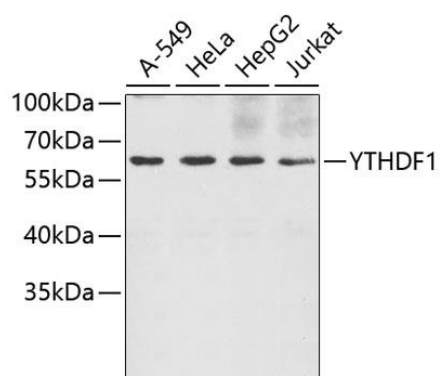
Immunogen:

Recombinant protein of human YTHDF1

Storage:

Store at -20°C. Avoid freeze / thaw cycles. Buffer: PBS with 0.02% sodium azide, 50% glycerol, pH7.3.

Product Images



Western blot analysis of extracts of various cell lines, using YTHDF1 antibody (CAB5985). Secondary antibody: HRP Goat Anti-Rabbit IgG (H+L) (CABS014) at 1:10000 dilution. Lysates/proteins: 25ug per lane. Blocking buffer: 3% nonfat dry milk in TBST.