

ALYREF Rabbit Polyclonal Antibody



CAB6010

Product Information

Size:

20uL, 50uL, 100uL, 200uL

Observed MW:

30kDa

Calculated MW:

26kDa

Applications:

WB IHC IF

Reactivity:

Human, Mouse, Rat

Protein Background

The protein encoded by this gene is a heat stable, nuclear protein and functions as a molecular chaperone. It is thought to regulate dimerization, DNA binding, and transcriptional activity of basic region-leucine zipper (bZIP) proteins.

Immunogen information

Gene ID:

10189

Uniprot

Q86V81

Synonyms:

ALYREF; ALY; ALY/REF; BEF; REF; THOC4

Antibody Information

Recommended dilutions:

WB 1:500 - 1:2000 IHC 1:50
- 1:200 IF 1:50 - 1:200

Source:

Rabbit

Isotype:

IgG

Purification:

Affinity purification

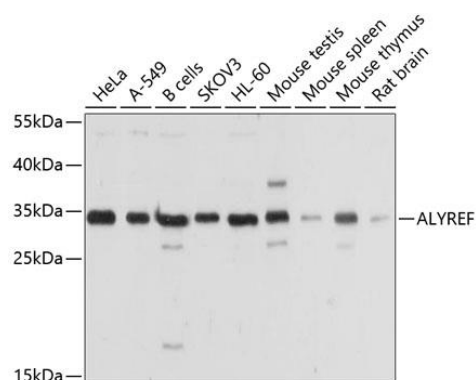
Immunogen:

Recombinant protein of human ALYREF

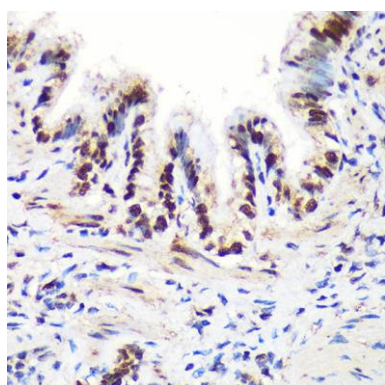
Storage:

Store at -20°C. Avoid freeze / thaw cycles. Buffer: PBS with 0.02% sodium azide, 50% glycerol, pH7.3.

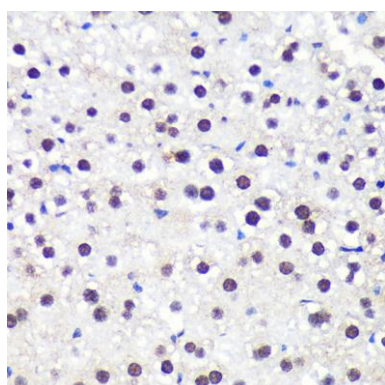
Product Images



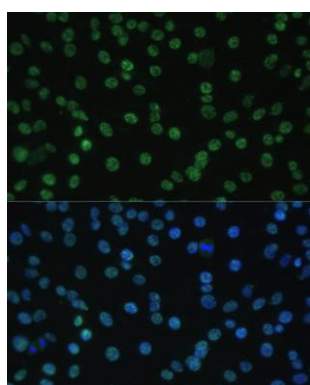
Western blot analysis of extracts of various cell lines, using ALYREF antibody (CAB6010) at 1:1000 dilution. Secondary antibody: HRP Goat Anti-Rabbit IgG (H+L) (CABS014) at 1:10000 dilution. Lysates/proteins: 25ug per lane. Blocking buffer: 3% nonfat dry milk in TBST. Detection: ECL Basic Kit (CABM00020). Exposure time: 5s.



Immunohistochemistry of paraffin-embedded Rat lung using ALYREF Rabbit pAb (CAB6010) at dilution of 1:100 (40x lens).



Immunohistochemistry of paraffin-embedded Mouse liver using ALYREF Rabbit pAb (CAB6010) at dilution of 1:100 (40x lens).



Immunofluorescence analysis of C6 cells using ALYREF Polyclonal Antibody (CAB6010) at dilution of 1:100 (40x lens). Blue: DAPI for nuclear staining.