

DICER1 Rabbit Polyclonal Antibody



CAB6021

Product Information

Size:

20uL, 50uL, 100uL, 200uL

Observed MW:

250kDa

Calculated MW:

92kDa/208kDa/218kDa

Applications:

WB IHC IF IP

Reactivity:

Human, Mouse, Rat

Antibody Information

Recommended dilutions:

WB 1:500 - 1:1000 IHC 1:50
- 1:200 IF 1:100 - 1:200 IP
1:50 - 1:200

Source:

Rabbit

Isotype:

IgG

Purification:

Affinity purification

Protein Background

This gene encodes a protein possessing an RNA helicase motif containing a DEXH box in its amino terminus and an RNA motif in the carboxy terminus. The encoded protein functions as a ribonuclease and is required by the RNA interference and small temporal RNA (stRNA) pathways to produce the active small RNA component that represses gene expression. Alternative splicing results in multiple transcript variants.

Immunogen information

Gene ID:

23405

Uniprot

Q9UPY3

Synonyms:

DICER1; DCR1; Dicer; Dicer1e; HERNA; K12H4.8-LIKE; MNG1;
RMSE2

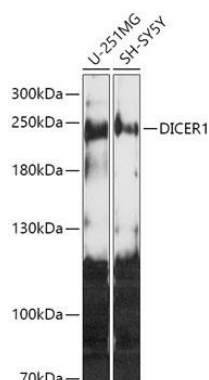
Immunogen:

Recombinant fusion protein containing a sequence corresponding to amino acids 1200-1460 of human DICER1 (NP_085124.2).

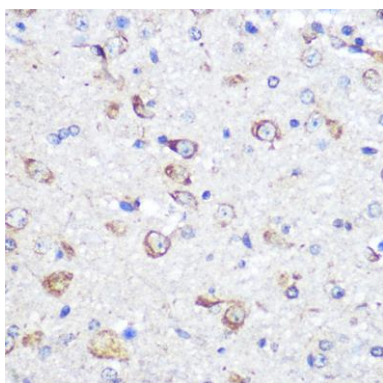
Storage:

Store at -20°C. Avoid freeze / thaw cycles. Buffer: PBS with 0.02% sodium azide, 50% glycerol, pH7.3.

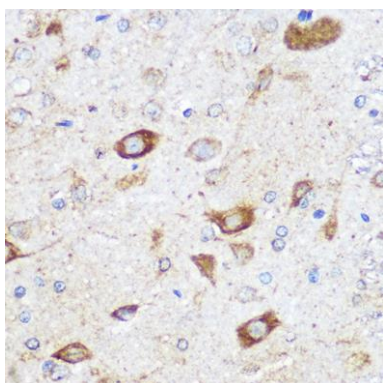
Product Images



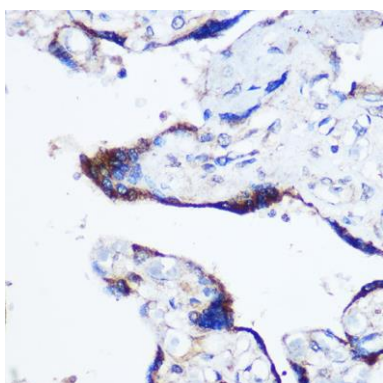
Western blot analysis of extracts of various cell lines, using DICER1 antibody (CAB6021) at 1:1000 dilution. Secondary antibody: HRP Goat Anti-Rabbit IgG (H+L) (CABS014) at 1:10000 dilution. Lysates/proteins: 25ug per lane. Blocking buffer: 3% nonfat dry milk in TBST. Detection: ECL Basic Kit (CABM00020). Exposure time: 3min.



Immunohistochemistry of paraffin-embedded Mouse brain using DICER1 Rabbit pAb (CAB6021) at dilution of 1:100 (40x lens).



Immunohistochemistry of paraffin-embedded Rat brain using DICER1 Rabbit pAb (CAB6021) at dilution of 1:100 (40x lens).



Immunohistochemistry of paraffin-embedded Human placenta using DICER1 Rabbit pAb (CAB6021) at dilution of 1:100 (40x lens).