

Argonaute-2 Rabbit Polyclonal Antibody



CAB6023

Product Information

Size:

20uL, 50uL, 100uL, 200uL

Observed MW:

97kDa

Calculated MW:

93kDa/97kDa

Applications:

WB IHC

Reactivity:

Human, Mouse, Rat

Antibody Information

Recommended dilutions:

WB 1:500 - 1:1000 IHC 1:50 - 1:200

Source:

Rabbit

Isotype:

IgG

Purification:

Affinity purification

Protein Background

This gene encodes a member of the Argonaute family of proteins which play a role in RNA interference. The encoded protein is highly basic, and contains a PAZ domain and a PIWI domain. It may interact with dicer1 and play a role in short-interfering-RNA-mediated gene silencing. Multiple transcript variants encoding different isoforms have been found for this gene.

Immunogen information

Gene ID:

27161

Uniprot

Q9UKV8

Synonyms:

AGO2; CASC7; EIF2C2; LINC00980; PPD; Q10; protein argonaute-2; Argonaute 2; EIF2C2

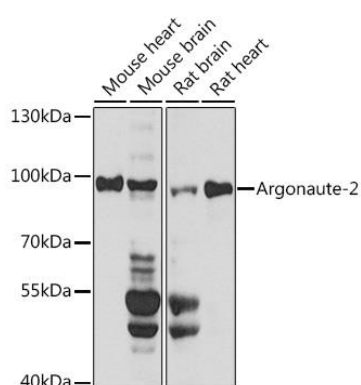
Immunogen:

A synthetic peptide corresponding to a sequence within amino acids 1-100 of human Argonaute-2 (NP_036286.2).

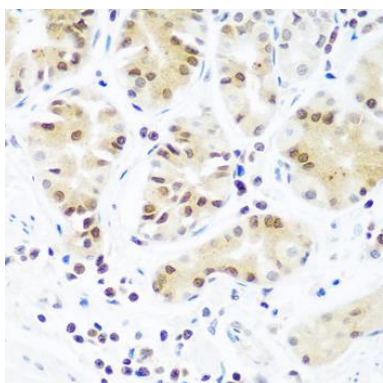
Storage:

Store at -20°C. Avoid freeze / thaw cycles. Buffer: PBS with 0.02% sodium azide, 50% glycerol, pH7.3.

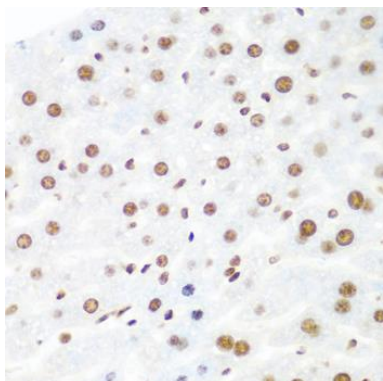
Product Images



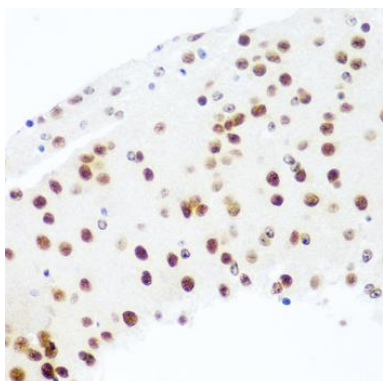
Western blot analysis of extracts of various cell lines, using Argonaute-2 antibody (CAB6023) at 1:1000 dilution. Secondary antibody: HRP Goat Anti-Rabbit IgG (H+L) (CABS014) at 1:10000 dilution. Lysates/proteins: 25ug per lane. Blocking buffer: 3% nonfat dry milk in TBST. Detection: ECL Basic Kit (CABM00020). Exposure time: 30s.



Immunohistochemistry of paraffin-embedded human stomach using Argonaute-2 antibody (CAB6023) at dilution of 1:100 (40x lens).



Immunohistochemistry of paraffin-embedded mouse liver using Argonaute-2 antibody (CAB6023) at dilution of 1:100 (40x lens).



Immunohistochemistry of paraffin-embedded mouse brain using Argonaute-2 antibody (CAB6023) at dilution of 1:100 (40x lens).