

HDLBP Rabbit Polyclonal Antibody



CAB6028

Product Information

Size:

20uL, 50uL, 100uL, 200uL

Observed MW:

150kDa

Calculated MW:

137kDa/141kDa

Applications:

WB IHC IF

Reactivity:

Human, Mouse, Rat

Protein Background

The protein encoded by this gene binds high density lipoprotein (HDL) and may function to regulate excess cholesterol levels in cells. The encoded protein also binds RNA and can induce heterochromatin formation.

Immunogen information

Gene ID:

3069

Uniprot

Q00341

Synonyms:

HDLBP; HBP; PRO2900; VGL; vigilin

Antibody Information

Recommended dilutions:

WB 1:500 - 1:2000 IHC 1:50
- 1:100 IF 1:50 - 1:100

Source:

Rabbit

Isotype:

IgG

Purification:

Affinity purification

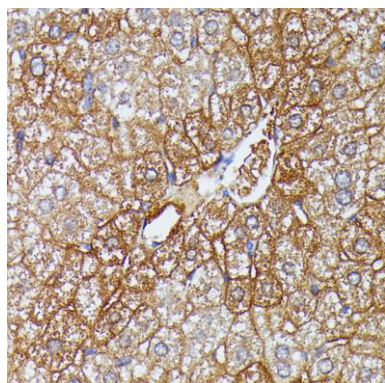
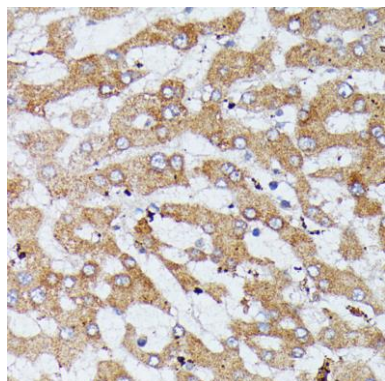
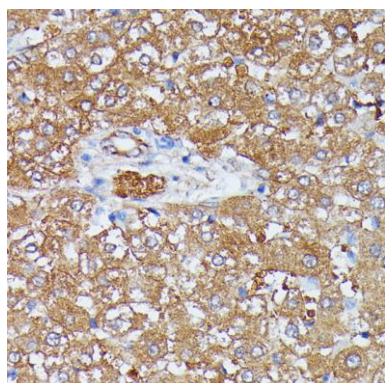
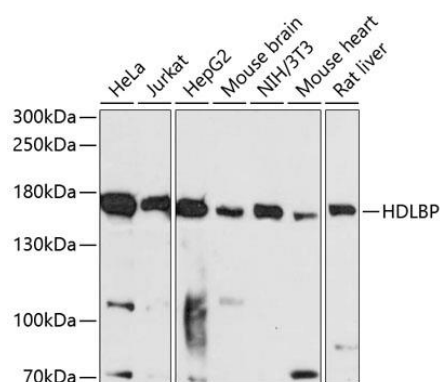
Immunogen:

Recombinant fusion protein containing a sequence corresponding to amino acids 1035-1268 of human HDLBP (NP_976221.1).

Storage:

Store at -20°C. Avoid freeze / thaw cycles. Buffer: PBS with 0.02% sodium azide, 50% glycerol, pH7.3.

Product Images



Western blot analysis of extracts of various cell lines, using HDLBP antibody (CAB6028) at 1:3000 dilution. Secondary antibody: HRP Goat Anti-Rabbit IgG (H+L) (CABS014) at 1:10000 dilution. Lysates/proteins: 25ug per lane. Blocking buffer: 3% nonfat dry milk in TBST. Detection: ECL Basic Kit (CABM00020). Exposure time: 30s.

Immunohistochemistry of paraffin-embedded rat liver using HDLBP antibody (CAB6028) at dilution of 1:100 (40x lens).

Immunohistochemistry of paraffin-embedded human liver using HDLBP antibody (CAB6028) at dilution of 1:100 (40x lens).

Immunohistochemistry of paraffin-embedded mouse liver using HDLBP antibody (CAB6028) at dilution of 1:100 (40x lens).