

# MAGOH Rabbit Polyclonal Antibody



CAB6035

---

## Product Information

### Size:

20uL, 50uL, 100uL, 200uL

### Observed MW:

17kDa

### Calculated MW:

12kDa/17kDa

### Applications:

WB

### Reactivity:

Human, Mouse, Rat

## Protein Background

Drosophila that have mutations in their mago nashi (grandchildless) gene produce progeny with defects in germlasm assembly and germline development. This gene encodes the mammalian mago nashi homolog. In mammals, mRNA expression is not limited to the germ plasm, but is expressed ubiquitously in adult tissues and can be induced by serum stimulation of quiescent fibroblasts.

## Immunogen information

### Gene ID:

4116

### Uniprot

P61326

### Synonyms:

MAGOH; MAGOH1; MAGOHA

## Antibody Information

### Recommended dilutions:

WB 1:500 - 1:2000

### Source:

Rabbit

### Isotype:

IgG

### Purification:

Affinity purification

### Immunogen:

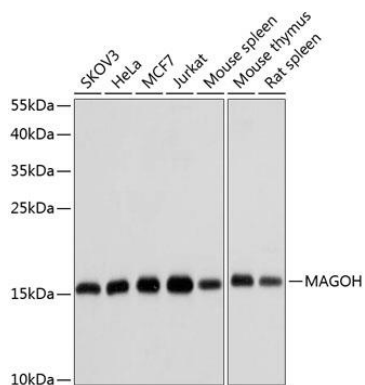
Recombinant fusion protein containing a sequence corresponding to amino acids 1-146 of human MAGOH (NP\_002361.1).

### Storage:

Store at -20°C. Avoid freeze / thaw cycles. Buffer: PBS with 0.02% sodium azide, 50% glycerol, pH7.3.

## Product Images

---



Western blot analysis of extracts of various cell lines, using MAGOH antibody (CAB6035) at 1:1000 dilution. Secondary antibody: HRP Goat Anti-Rabbit IgG (H+L) (CABS014) at 1:10000 dilution. Lysates/proteins: 25ug per lane. Blocking buffer: 3% nonfat dry milk in TBST. Detection: ECL Basic Kit (CABM00020). Exposure time: 10s.