

PIWIL2 Rabbit Polyclonal Antibody



CAB6044

Product Information

Size:

20uL, 50uL, 100uL, 200uL

Observed MW:

110kDa

Calculated MW:

105kDa/109kDa

Applications:

WB IHC

Reactivity:

Mouse, Rat

Antibody Information

Recommended dilutions:

WB 1:1000 - 1:3000 IHC

1:100 - 1:200

Source:

Rabbit

Isotype:

IgG

Purification:

Affinity purification

Protein Background

Immunogen information

Gene ID:

57746

Uniprot

Synonyms:

PIWIL2; CT80; HILI; PIWIL1L; mili

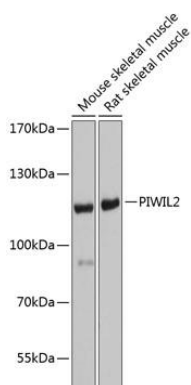
Immunogen:

Recombinant protein of mouse PIWIL2

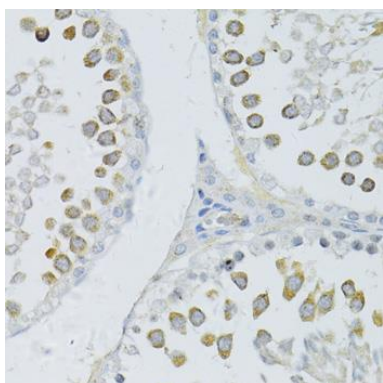
Storage:

Store at -20°C. Avoid freeze / thaw cycles. Buffer: PBS with 0.02% sodium azide, 50% glycerol, pH7.3.

Product Images



Western blot analysis of extracts of various cell lines, using PIWIL2 antibody (CAB6044) at 1:1000 dilution. Secondary antibody: HRP Goat Anti-Rabbit IgG (H+L) (CABS014) at 1:10000 dilution. Lysates/proteins: 25ug per lane. Blocking buffer: 3% nonfat dry milk in TBST. Detection: ECL Basic Kit (CABM00020). Exposure time: 5s.



Immunohistochemistry of paraffin-embedded rat testis using PIWIL2 antibody (CAB6044) at dilution of 1:100 (40x lens).