

PRPF4 Rabbit Polyclonal Antibody



CAB6052

Product Information

Size:

20uL, 50uL, 100uL, 200uL

Observed MW:

58kDa

Calculated MW:

58kDa

Applications:

WB IHC

Reactivity:

Human, Mouse, Rat

Protein Background

The protein encoded by this gene is part of a heteromeric complex that binds U4, U5, and U6 small nuclear RNAs and is involved in pre-mRNA splicing. The encoded protein also is a mitotic checkpoint protein and a regulator of chemoresistance in human ovarian cancer. Several transcript variants encoding different isoforms have been found for this gene.

Immunogen information

Gene ID:

9128

Uniprot

O43172

Synonyms:

PRPF4; HPRP4; HPRP4P; PRP4; Prp4p; RP70; SNRNP60

Antibody Information

Recommended dilutions:

WB 1:500 - 1:2000 IHC 1:50
- 1:200

Source:

Rabbit

Isotype:

IgG

Purification:

Affinity purification

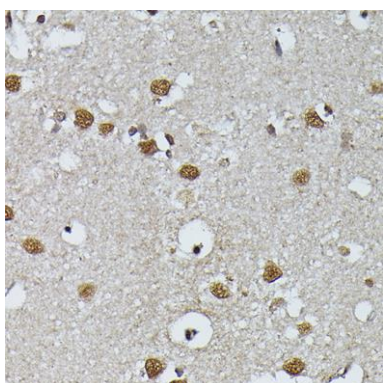
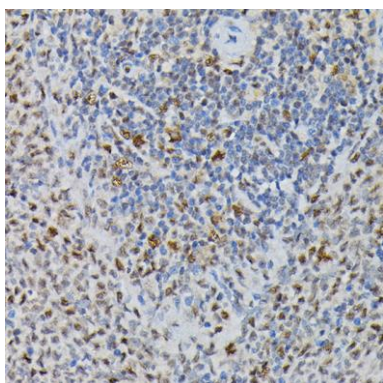
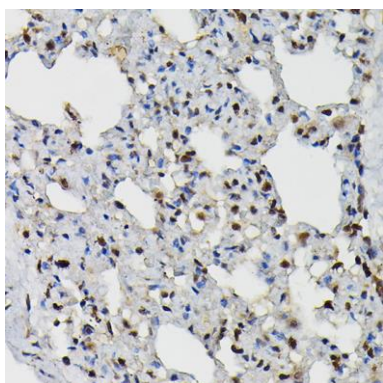
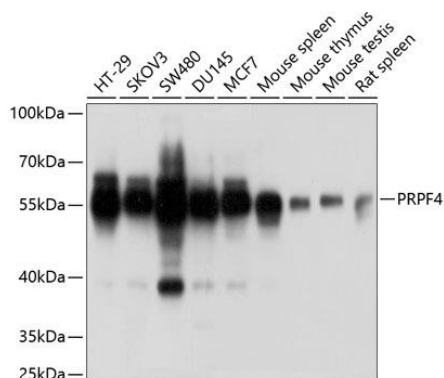
Immunogen:

Recombinant fusion protein containing a sequence corresponding to amino acids 1-260 of human PRPF4 (NP_004688.2).

Storage:

Store at -20°C. Avoid freeze / thaw cycles. Buffer: PBS with 0.02% sodium azide, 50% glycerol, pH7.3.

Product Images



Western blot analysis of extracts of various cell lines, using PRPF4 antibody (CAB6052) at 1:1000 dilution. Secondary antibody: HRP Goat Anti-Rabbit IgG (H+L) (CABS014) at 1:10000 dilution. Lysates/proteins: 25ug per lane. Blocking buffer: 3% nonfat dry milk in TBST. Detection: ECL Basic Kit (CABM00020). Exposure time: 1s.

Immunohistochemistry of paraffin-embedded rat lung using PRPF4 Rabbit pAb (CAB6052) at dilution of 1:200 (40x lens).

Immunohistochemistry of paraffin-embedded rat spleen using PRPF4 Rabbit pAb (CAB6052) at dilution of 1:200 (40x lens).

Immunohistochemistry of paraffin-embedded human brain using PRPF4 Rabbit pAb (CAB6052) at dilution of 1:200 (40x lens).