

PRPF8 Rabbit Polyclonal Antibody



CAB6053

Product Information

Size:

20uL, 50uL, 100uL, 200uL

Observed MW:

274kDa

Calculated MW:

273kDa

Applications:

WB IHC IF IP

Reactivity:

Human, Mouse, Rat

Protein Background

Pre-mRNA splicing occurs in 2 sequential transesterification steps. The protein encoded by this gene is a component of both U2- and U12-dependent spliceosomes, and found to be essential for the catalytic step II in pre-mRNA splicing process. It contains several WD repeats, which function in protein-protein interactions. This protein has a sequence similarity to yeast Prp8 protein. This gene is a candidate gene for autosomal dominant retinitis pigmentosa.

Immunogen information

Gene ID:

10594

Uniprot

Q6P2Q9

Synonyms:

PRPF8; HPRP8; PRP8; PRPC8; RP13; SNRNP220; PRPF8

Antibody Information

Recommended dilutions:

WB 1:500 - 1:1000 IHC 1:50
- 1:100 IF 1:50 - 1:100 IP
1:50 - 1:100

Source:

Rabbit

Isotype:

IgG

Purification:

Affinity purification

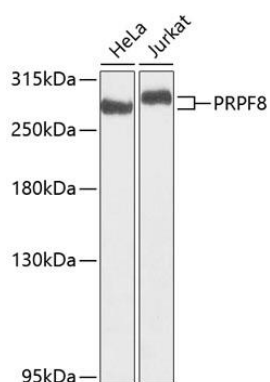
Immunogen:

A synthetic peptide corresponding to a sequence within amino acids 1-100 of human PRPF8 (NP_006436.3).

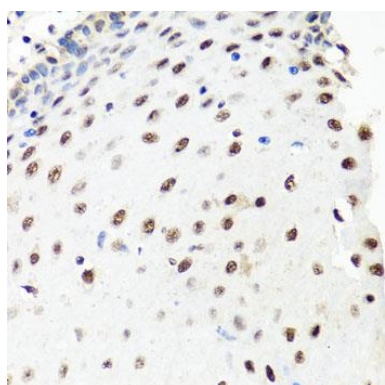
Storage:

Store at -20°C. Avoid freeze / thaw cycles. Buffer: PBS with 0.02% sodium azide, 50% glycerol, pH7.3.

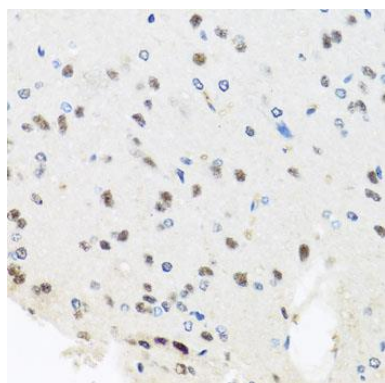
Product Images



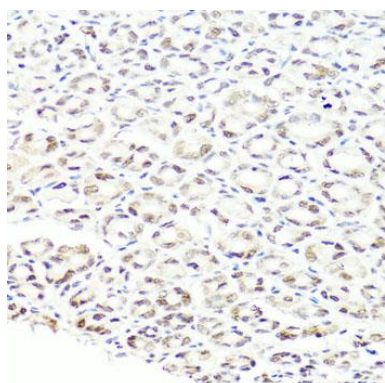
Western blot analysis of extracts of various cell lines, using PRPF8 antibody (CAB6053) at 1:1000 dilution. Secondary antibody: HRP Goat Anti-Rabbit IgG (H+L) (CABS014) at 1:10000 dilution. Lysates/proteins: 25ug per lane. Blocking buffer: 3% nonfat dry milk in TBST. Detection: ECL Basic Kit (CABM00020). Exposure time: 10s.



Immunohistochemistry of paraffin-embedded human esophagus using PRPF8 antibody (CAB6053) at dilution of 1:100 (40x lens).



Immunohistochemistry of paraffin-embedded rat brain using PRPF8 antibody (CAB6053) at dilution of 1:100 (40x lens).



Immunohistochemistry of paraffin-embedded mouse stomach using PRPF8 antibody (CAB6053) at dilution of 1:100 (40x lens).