

PTBP2 Rabbit Polyclonal Antibody



CAB6054

Product Information

Size:

20uL, 50uL, 100uL, 200uL

Observed MW:

57kDa

Calculated MW:

37kDa/38kDa/57kDa/58kDa

Applications:

WB IHC

Reactivity:

Human, Mouse, Rat

Protein Background

The protein encoded by this gene binds to intronic polypyrimidine clusters in pre-mRNA molecules and is implicated in controlling the assembly of other splicing-regulatory proteins. This protein is very similar to the polypyrimidine tract binding protein (PTB) but most of its isoforms are expressed primarily in the brain. Alternative splicing results in multiple transcript variants.

Immunogen information

Gene ID:

58155

Uniprot

Q9UKA9

Synonyms:

PTBP2; PTBLP; brPTB; nPTB

Antibody Information

Recommended dilutions:

WB 1:1000 - 1:4000 IHC

1:50 - 1:200

Source:

Rabbit

Isotype:

IgG

Purification:

Affinity purification

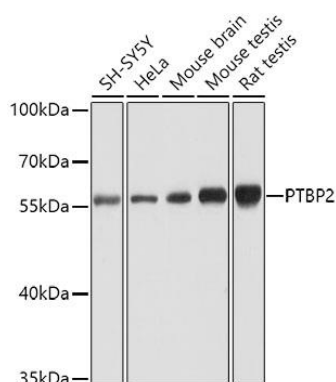
Immunogen:

Recombinant fusion protein containing a sequence corresponding to amino acids 1-280 of human PTBP2 (NP_001287918.1).

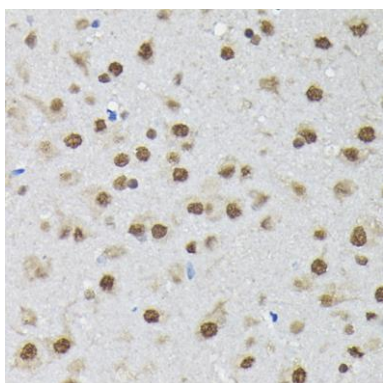
Storage:

Store at -20°C. Avoid freeze / thaw cycles. Buffer: PBS with 0.02% sodium azide, 50% glycerol, pH7.3.

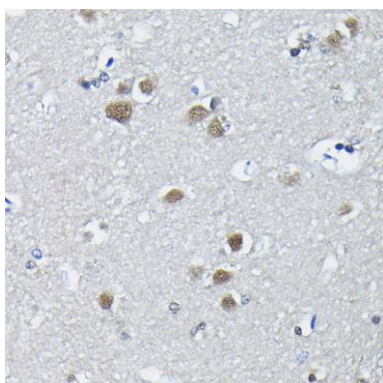
Product Images



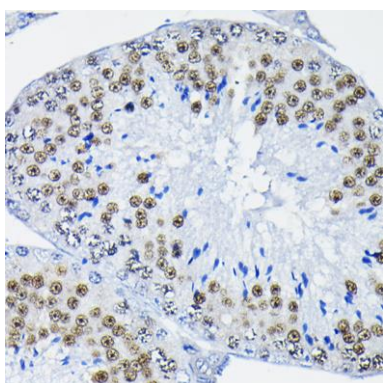
Western blot analysis of extracts of various cell lines, using PTBP2 antibody (CAB6054) at 1:1000 dilution. Secondary antibody: HRP Goat Anti-Rabbit IgG (H+L) (CABS014) at 1:10000 dilution. Lysates/proteins: 25ug per lane. Blocking buffer: 3% nonfat dry milk in TBST. Detection: ECL Basic Kit (CABM00020). Exposure time: 10s.



Immunohistochemistry of paraffin-embedded rat brain using PTBP2 Rabbit pAb (CAB6054) at dilution of 1:100 (40x lens).



Immunohistochemistry of paraffin-embedded human brain using PTBP2 Rabbit pAb (CAB6054) at dilution of 1:100 (40x lens).



Immunohistochemistry of paraffin-embedded mouse testis using PTBP2 Rabbit pAb (CAB6054) at dilution of 1:100 (40x lens).