

[KO Validated] HuR / ELAVL1 Rabbit Polyclonal Antibody

CAB6089



Product Information

Size:

20uL, 50uL, 100uL, 200uL

Observed MW:

36kDa

Calculated MW:

36kDa/38kDa

Applications:

WB IHC IF

Reactivity:

Human, Mouse

Protein Background

The protein encoded by this gene is a member of the ELAVL family of RNA-binding proteins that contain several RNA recognition motifs, and selectively bind AU-rich elements (AREs) found in the 3' untranslated regions of mRNAs. AREs signal degradation of mRNAs as a means to regulate gene expression, thus by binding AREs, the ELAVL family of proteins play a role in stabilizing ARE-containing mRNAs. This gene has been implicated in a variety of biological processes and has been linked to a number of diseases, including cancer. It is highly expressed in many cancers, and could be potentially useful in cancer diagnosis, prognosis, and therapy.

Immunogen information

Gene ID:

1994

Uniprot

Q15717

Synonyms:

ELAV1; HUR; Hua; MeIG; HuR / ELAVL1; ELAVL1

Antibody Information

Recommended dilutions:

WB 1:500 - 1:1000 IHC 1:50
- 1:200 IF 1:50 - 1:200

Source:

Rabbit

Isotype:

IgG

Purification:

Affinity purification

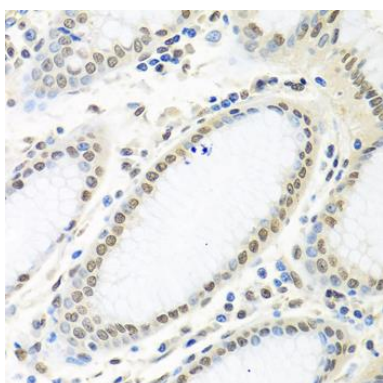
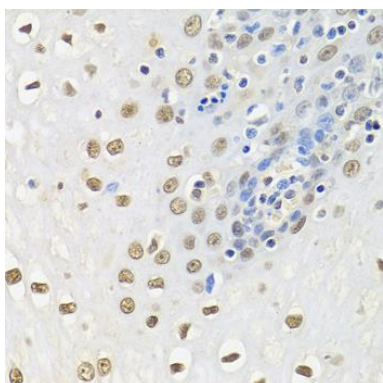
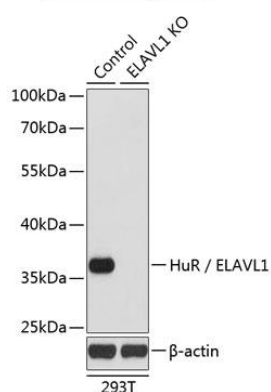
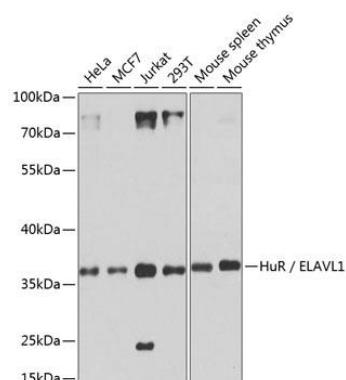
Immunogen:

A synthetic peptide corresponding to a sequence within amino acids 1-100 of human HuR / ELAVL1 (NP_001410.2).

Storage:

Store at -20°C. Avoid freeze / thaw cycles. Buffer: PBS with 0.02% sodium azide, 50% glycerol, pH7.3.

Product Images



Western blot analysis of extracts of various cell lines, using HuR / ELAVL1 antibody (CAB6089) at 1:1000 dilution. Secondary antibody: HRP Goat Anti-Rabbit IgG (H+L) (CABS014) at 1:10000 dilution. Lysates/proteins: 25ug per lane. Blocking buffer: 3% nonfat dry milk in TBST. Detection: ECL Basic Kit (CABM00020). Exposure time: 20s.

Western blot analysis of extracts from normal (control) and HuR / ELAVL1 knockout (KO) 293T cells, using HuR / ELAVL1 antibody (CAB6089) at 1:1000 dilution. Secondary antibody: HRP Goat Anti-Rabbit IgG (H+L) (CABS014) at 1:10000 dilution. Lysates/proteins: 25ug per lane. Blocking buffer: 3% nonfat dry milk in TBST. Detection: ECL Enhanced Kit (CABM00021). Exposure time: 90s.

Immunohistochemistry of paraffin-embedded human esophagus using HuR / ELAVL1 antibody (CAB6089) at dilution of 1:100 (40x lens).

Immunohistochemistry of paraffin-embedded human stomach using HuR / ELAVL1 antibody (CAB6089) at dilution of 1:100 (40x lens).