

# FMR1 Rabbit Polyclonal Antibody



CAB6092

## Product Information

### Size:

20uL, 50uL, 100uL, 200uL

### Observed MW:

71kDa

### Calculated MW:

58kDa/61kDa/66kDa/68kDa/  
69kDa/70kDa/71kDa

### Applications:

WB IHC IF

### Reactivity:

Human, Mouse, Rat

## Antibody Information

### Recommended dilutions:

WB 1:500 - 1:1000 IHC 1:50  
- 1:200 IF 1:100 - 1:200

### Source:

Rabbit

### Isotype:

IgG

### Purification:

Affinity purification

## Protein Background

The protein encoded by this gene binds RNA and is associated with polysomes. The encoded protein may be involved in mRNA trafficking from the nucleus to the cytoplasm. A trinucleotide repeat (CGG) in the 5' UTR is normally found at 6-53 copies, but an expansion to 55-230 repeats is the cause of fragile X syndrome. Expansion of the trinucleotide repeat may also cause one form of premature ovarian failure (POF1). Multiple alternatively spliced transcript variants that encode different protein isoforms and which are located in different cellular locations have been described for this gene.

## Immunogen information

### Gene ID:

2332

### Uniprot

Q06787

### Synonyms:

FMRP; FRAXA; POF; POF1; FMR1; POFX

### Immunogen:

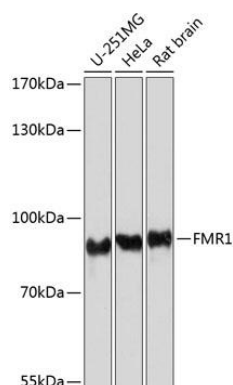
A synthetic peptide corresponding to a sequence within amino acids 500-600 of human FMR1 (NP\_002015.1).

### Storage:

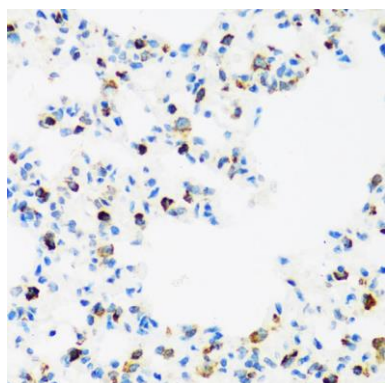
Store at -20°C. Avoid freeze / thaw cycles. Buffer: PBS with 0.02% sodium azide, 50% glycerol, pH7.3.

## Product Images

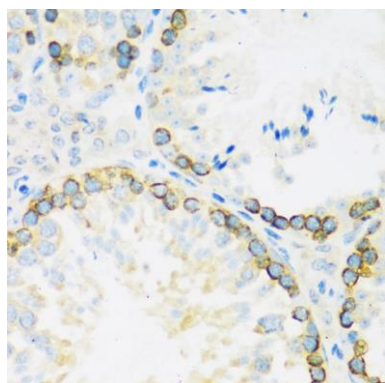
---



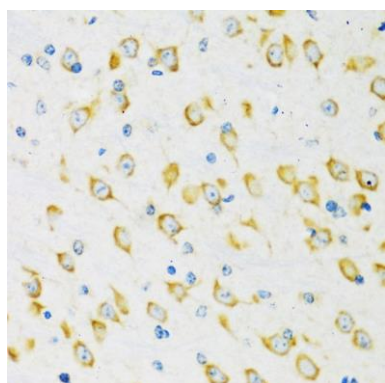
Western blot analysis of extracts of various cell lines, using FMR1 antibody (CAB6092) at 1:1000 dilution. Secondary antibody: HRP Goat Anti-Rabbit IgG (H+L) (CABS014) at 1:10000 dilution. Lysates/proteins: 25ug per lane. Blocking buffer: 3% nonfat dry milk in TBST. Detection: ECL Basic Kit (CABM00020). Exposure time: 10s.



Immunohistochemistry of paraffin-embedded rat lung using FMR1 antibody (CAB6092) at dilution of 1:100 (40x lens).



Immunohistochemistry of paraffin-embedded mouse testis using FMR1 antibody (CAB6092) at dilution of 1:100 (40x lens).



Immunohistochemistry of paraffin-embedded mouse brain using FMR1 antibody (CAB6092) at dilution of 1:100 (40x lens).