

IGF2BP3 Rabbit Polyclonal Antibody



CAB6099

Product Information

Size:

20uL, 50uL, 100uL, 200uL

Observed MW:

70kDa

Calculated MW:

21kDa/63kDa

Applications:

WB IHC IF IP

Reactivity:

Human, Mouse, Rat

Protein Background

The protein encoded by this gene is primarily found in the nucleolus, where it can bind to the 5' UTR of the insulin-like growth factor II leader 3 mRNA and may repress translation of insulin-like growth factor II during late development. The encoded protein contains several KH domains, which are important in RNA binding and are known to be involved in RNA synthesis and metabolism. A pseudogene exists on chromosome 7, and there are putative pseudogenes on other chromosomes.

Immunogen information

Gene ID:

10643

Uniprot

O00425

Synonyms:

IGF2BP3; CT98; IMP-3; IMP3; KOC; KOC1; VICKZ3

Antibody Information

Recommended dilutions:

WB 1:500 - 1:1000 IHC 1:50
- 1:200 IF 1:50 - 1:100 IP
1:20 - 1:50

Source:

Rabbit

Isotype:

IgG

Purification:

Affinity purification

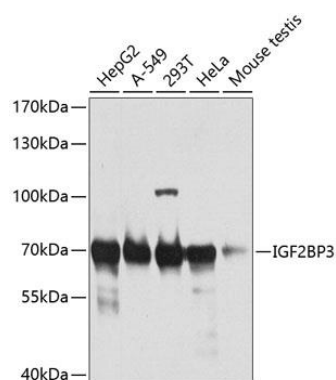
Immunogen:

Recombinant fusion protein containing a sequence corresponding to amino acids 300-579 of human IGF2BP3 (NP_006538.2).

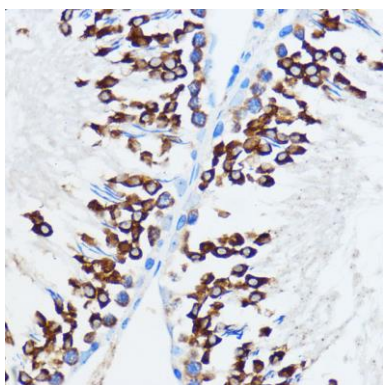
Storage:

Store at -20°C. Avoid freeze / thaw cycles. Buffer: PBS with 0.02% sodium azide, 50% glycerol, pH7.3.

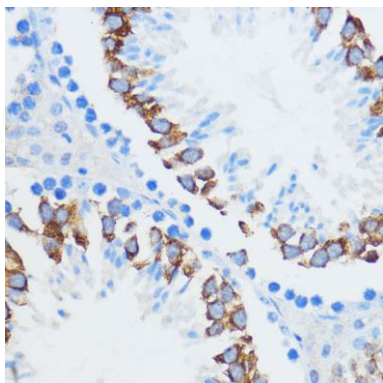
Product Images



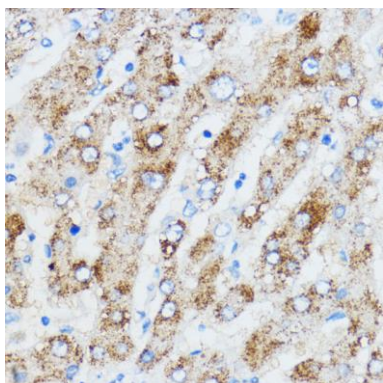
Western blot analysis of extracts of various cell lines, using IGF2BP3 antibody (CAB6099) at 1:1000 dilution. Secondary antibody: HRP Goat Anti-Rabbit IgG (H+L) (CABS014) at 1:10000 dilution. Lysates/proteins: 25ug per lane. Blocking buffer: 3% nonfat dry milk in TBST. Detection: ECL Basic Kit (CABM00020). Exposure time: 15s.



Immunohistochemistry of paraffin-embedded rat testis using IGF2BP3 antibody (CAB6099) at dilution of 1:100 (40x lens).



Immunohistochemistry of paraffin-embedded mouse testis using IGF2BP3 antibody (CAB6099) at dilution of 1:100 (40x lens).



Immunohistochemistry of paraffin-embedded human liver using IGF2BP3 antibody (CAB6099) at dilution of 1:100 (40x lens).