

# KHDRBS2 Rabbit Polyclonal Antibody



CAB6102

## Product Information

### Size:

20uL, 50uL, 100uL, 200uL

### Observed MW:

39kDa

### Calculated MW:

38kDa

### Applications:

WB IHC

### Reactivity:

Human, Mouse

## Antibody Information

### Recommended dilutions:

WB 1:500 - 1:1000 IHC

1:100 - 1:200

### Source:

Rabbit

### Isotype:

IgG

### Purification:

Affinity purification

## Protein Background

### Immunogen information

#### Gene ID:

202559

#### Uniprot

Q5VWX1

#### Synonyms:

KHDRBS2; SLM-1; SLM1

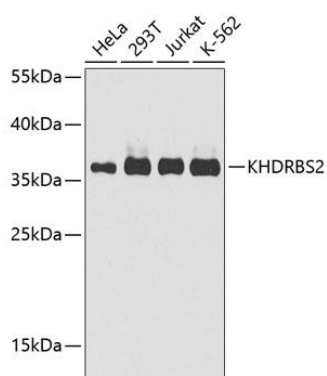
#### Immunogen:

A synthetic peptide corresponding to a sequence within amino acids 200 to the C-terminus of human KHDRBS2 (NP\_689901.2).

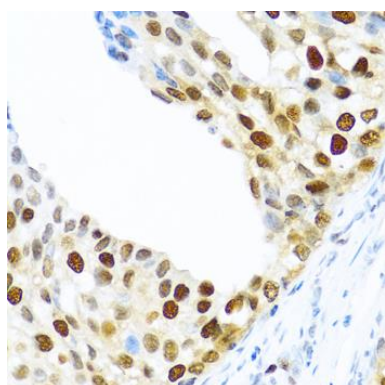
#### Storage:

Store at -20°C. Avoid freeze / thaw cycles. Buffer: PBS with 0.02% sodium azide, 50% glycerol, pH7.3.

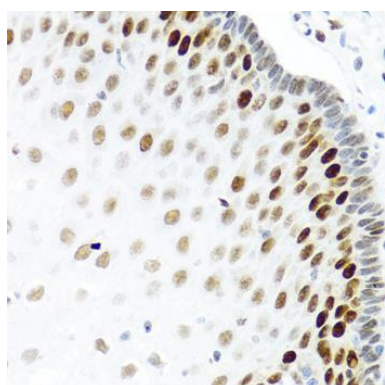
## Product Images



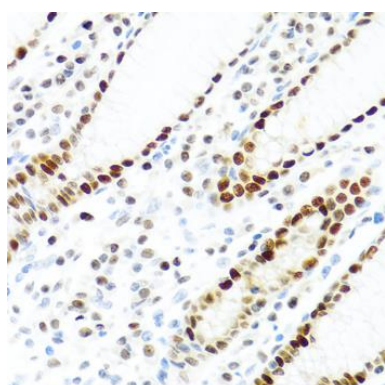
Western blot analysis of extracts of various cell lines, using KHDRBS2 antibody (CAB6102) at 1:1000 dilution. Secondary antibody: HRP Goat Anti-Rabbit IgG (H+L) (CABS014) at 1:10000 dilution. Lysates/proteins: 25ug per lane. Blocking buffer: 3% nonfat dry milk in TBST. Detection: ECL Enhanced Kit (CABM00021). Exposure time: 30s.



Immunohistochemistry of paraffin-embedded human prostate cancer using KHDRBS2 antibody (CAB6102) at dilution of 1:100 (40x lens).



Immunohistochemistry of paraffin-embedded human esophagus using KHDRBS2 antibody (CAB6102) at dilution of 1:100 (40x lens).



Immunohistochemistry of paraffin-embedded human stomach using KHDRBS2 antibody (CAB6102) at dilution of 1:100 (40x lens).