

# CLCN2 Rabbit Polyclonal Antibody



CAB6120

---

## Product Information

### Size:

20uL, 50uL, 100uL, 200uL

### Observed MW:

90-98kDa

### Calculated MW:

14kDa/93kDa/95kDa/96kDa/  
98kDa

### Applications:

WB

### Reactivity:

Human, Mouse

## Protein Background

This gene encodes a voltage-gated chloride channel. The encoded protein is a transmembrane protein that maintains chloride ion homeostasis in various cells. Defects in this gene may be a cause of certain epilepsies. Four transcript variants encoding different isoforms have been found for this gene.

## Immunogen information

### Gene ID:

1181

### Uniprot

P51788

### Synonyms:

CLCN2; CIC-2; CLC2; ECA2; ECA3; EGI11; EGI3; EGMA; EJM6; EJM8;  
LKPAT; cIC-2

## Antibody Information

### Recommended dilutions:

WB 1:500 - 1:2000

### Source:

Rabbit

### Isotype:

IgG

### Purification:

Affinity purification

### Immunogen:

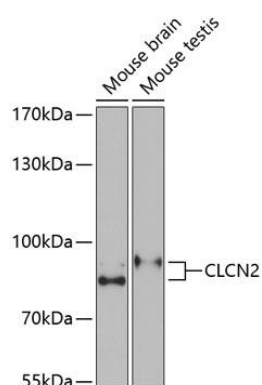
A synthetic peptide corresponding to a sequence within amino acids 800 to the C-terminus of human CLCN2 (NP\_004357.3).

### Storage:

Store at -20°C. Avoid freeze / thaw cycles. Buffer: PBS with 0.02% sodium azide, 50% glycerol, pH7.3.

## Product Images

---



Western blot analysis of extracts of various cell lines, using CLCN2 Antibody (CAB6120) at 1:1000 dilution. Secondary antibody: HRP Goat Anti-Rabbit IgG (H+L) (CABS014) at 1:10000 dilution. Lysates/proteins: 25ug per lane. Blocking buffer: 3% nonfat dry milk in TBST. Detection: ECL Basic Kit (CABM00020). Exposure time: 90s.