

# ERBB4 Rabbit Polyclonal Antibody



CAB6133

## Product Information

### Size:

20uL, 50uL, 100uL, 200uL

### Observed MW:

180kDa

### Calculated MW:

143kDa/145kDa/146kDa

### Applications:

WB IHC IF

### Reactivity:

Human, Mouse, Rat

## Antibody Information

### Recommended dilutions:

WB 1:500 - 1:1000 IHC 1:50  
- 1:100 IF 1:50 - 1:100

### Source:

Rabbit

### Isotype:

IgG

### Purification:

Affinity purification

## Protein Background

This gene is a member of the Tyr protein kinase family and the epidermal growth factor receptor subfamily. It encodes a single-pass type I membrane protein with multiple cysteine rich domains, a transmembrane domain, a tyrosine kinase domain, a phosphotylinositol-3 kinase binding site and a PDZ domain binding motif. The protein binds to and is activated by neuregulins and other factors and induces a variety of cellular responses including mitogenesis and differentiation. Multiple proteolytic events allow for the release of a cytoplasmic fragment and an extracellular fragment. Mutations in this gene have been associated with cancer. Alternatively spliced variants which encode different protein isoforms have been described; however, not all variants have been fully characterized.

## Immunogen information

### Gene ID:

2066

### Uniprot

Q15303

### Synonyms:

ALS19; HER4; p180erbB4; ERBB4; HER4/ErbB4

### Immunogen:

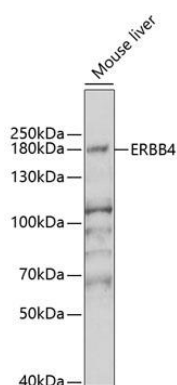
Recombinant fusion protein containing a sequence corresponding to amino acids 26-160 of human ERBB4 (NP\_005226.1).

### Storage:

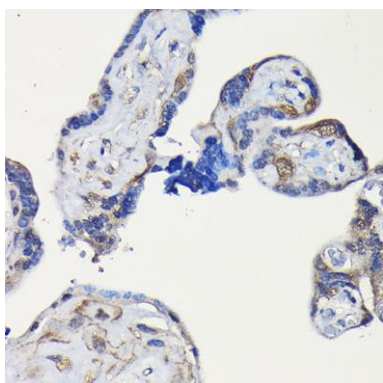
Store at -20°C. Avoid freeze / thaw cycles. Buffer: PBS with 0.02% sodium azide, 50% glycerol, pH7.3.

## Product Images

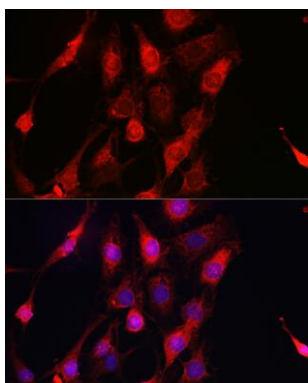
---



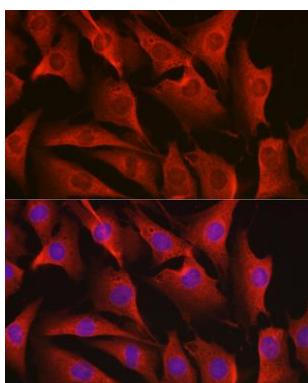
Western blot analysis of extracts of mouse brain, using ERBB4 antibody (CAB6133) at 1:1000 dilution. Secondary antibody: HRP Goat Anti-Rabbit IgG (H+L) (CABS014) at 1:10000 dilution. Lysates/proteins: 25ug per lane. Blocking buffer: 3% nonfat dry milk in TBST. Detection: ECL Enhanced Kit (CABM00021). Exposure time: 10s.



Immunohistochemistry of paraffin-embedded human placenta using ERBB4 Rabbit pAb (CAB6133) at dilution of 1:100 (40x lens).



Immunofluorescence analysis of C6 cells using ERBB4 Rabbit pAb (CAB6133) at dilution of 1:100 (40x lens). Blue: DAPI for nuclear staining.



Immunofluorescence analysis of NIH-3T3 cells using ERBB4 Rabbit pAb (CAB6133) at dilution of 1:100 (40x lens). Blue: DAPI for nuclear staining.