

TRPM2 Rabbit Polyclonal Antibody



CAB6137

Product Information

Size:

20uL, 50uL, 100uL, 200uL

Observed MW:

171kDa

Calculated MW:

95kDa/165kDa/171kDa

Applications:

WB IF

Reactivity:

Mouse, Rat

Antibody Information

Recommended dilutions:

WB 1:500 - 1:2000 IF 1:50 - 1:100

Source:

Rabbit

Isotype:

IgG

Purification:

Affinity purification

Protein Background

The protein encoded by this gene forms a tetrameric cation channel that is permeable to calcium, sodium, and potassium and is regulated by free intracellular ADP-ribose. The encoded protein is activated by oxidative stress and confers susceptibility to cell death. Alternative splicing results in multiple transcript variants encoding distinct protein isoforms. Additional transcript variants of this gene have been described, but their full-length nature is not known.

Immunogen information

Gene ID:

7226

Uniprot

O94759

Synonyms:

TRPM2; EREG1; KNP3; LTRPC2; LTrpC-2; NUDT9H; NUDT9L1; TRPC7

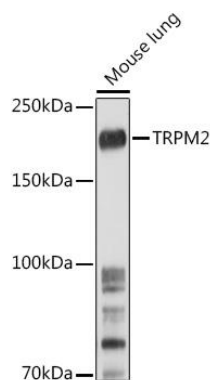
Immunogen:

A synthetic peptide corresponding to a sequence within amino acids 900-1000 of human TRPM2 (NP_003298.1).

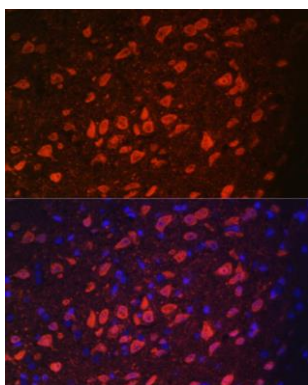
Storage:

Store at -20°C. Avoid freeze / thaw cycles. Buffer: PBS with 0.02% sodium azide, 50% glycerol, pH7.3.

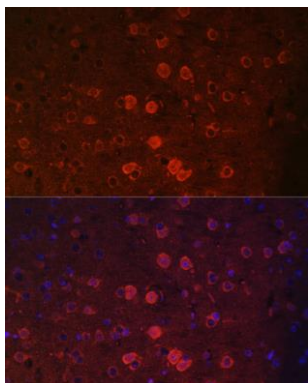
Product Images



Western blot analysis of extracts of Mouse lung, using TRPM2 antibody (CAB6137) at 1:500 dilution. Secondary antibody: HRP Goat Anti-Rabbit IgG (H+L) (CABS014) at 1:10000 dilution. Lysates/proteins: 25ug per lane. Blocking buffer: 3% nonfat dry milk in TBST. Detection: ECL Enhanced Kit (RM00062). Exposure time: 90s.



Immunofluorescence analysis of rat brain using TRPM2 antibody (CAB6137) at dilution of 1:100. Blue: DAPI for nuclear staining.



Immunofluorescence analysis of mouse brain using TRPM2 antibody (CAB6137) at dilution of 1:100. Blue: DAPI for nuclear staining.