

IL31RA Rabbit Polyclonal Antibody



CAB6141

Product Information

Size:

20uL, 50uL, 100uL, 200uL

Observed MW:

83kDa

Calculated MW:

41kDa/58-86kDa

Applications:

WB

Reactivity:

Human, Mouse

Antibody Information

Recommended dilutions:

WB 1:500 - 1:2000

Source:

Rabbit

Isotype:

IgG

Purification:

Affinity purification

Protein Background

The protein encoded by this gene belongs to the type I cytokine receptor family. This receptor, with homology to gp130, is expressed on monocytes, and is involved in IL-31 signaling via activation of STAT-3 and STAT-5. It functions either as a monomer, or as part of a receptor complex with oncostatin M receptor (OSMR). Several alternatively spliced transcript variants encoding different isoforms have been noted for this gene.

Immunogen information

Gene ID:

133396

Uniprot

Q8NI17

Synonyms:

IL31RA; CRL; CRL3; GLM-R; GLMR; GPL; IL-31RA; PLCA2; PRO21384; hGLM-R

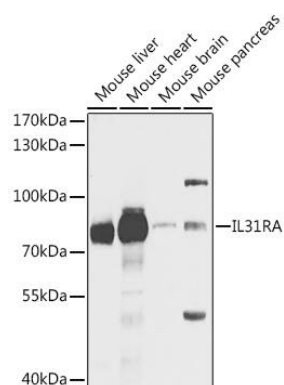
Immunogen:

Recombinant fusion protein containing a sequence corresponding to amino acids 1-300 of human IL31RA (NP_001229568.1).

Storage:

Store at -20°C. Avoid freeze / thaw cycles. Buffer: PBS with 0.02% sodium azide, 50% glycerol, pH7.3.

Product Images



Western blot analysis of extracts of various cell lines, using IL31RA antibody (CAB6141) at 1:1000 dilution. Secondary antibody: HRP Goat Anti-Rabbit IgG (H+L) (CABS014) at 1:10000 dilution. Lysates/proteins: 25ug per lane. Blocking buffer: 3% nonfat dry milk in TBST. Detection: ECL Basic Kit (CABM00020). Exposure time: 90s.