

KMT2E Rabbit Polyclonal Antibody



CAB6142

Product Information

Size:

20uL, 50uL, 100uL, 200uL

Observed MW:

95-140kDa

Calculated MW:

68kDa/98kDa/131kDa/180-204kDa

Applications:

WB IHC IF

Reactivity:

Human, Mouse, Rat

Antibody Information

Recommended dilutions:

WB 1:500 - 1:2000 IHC 1:50
- 1:200 IF 1:50 - 1:200

Source:

Rabbit

Isotype:

IgG

Purification:

Affinity purification

Protein Background

This gene is a member of the myeloid/lymphoid or mixed-lineage leukemia (MLL) family and encodes a protein with an N-terminal PHD zinc finger and a central SET domain. Overexpression of the protein inhibits cell cycle progression. Alternate transcriptional splice variants have been characterized.

Immunogen information

Gene ID:

55904

Uniprot

Q8IZD2

Synonyms:

KMT2E; HDCMC04P; MLL5; NKp44L

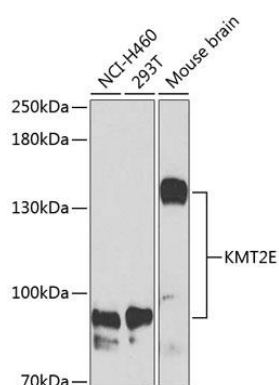
Immunogen:

Recombinant fusion protein containing a sequence corresponding to amino acids 200-500 of human KMT2E (NP_061152.3).

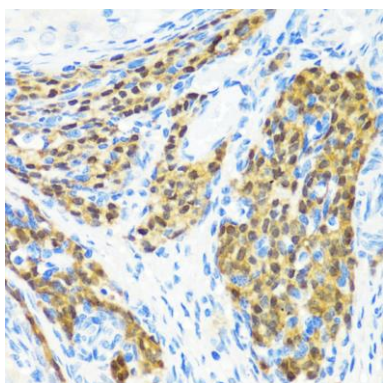
Storage:

Store at -20°C. Avoid freeze / thaw cycles. Buffer: PBS with 0.02% sodium azide, 50% glycerol, pH7.3.

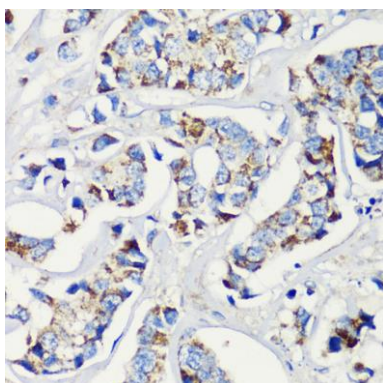
Product Images



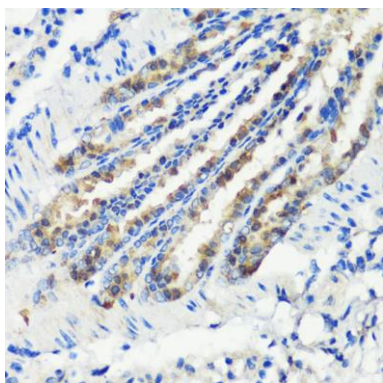
Western blot analysis of extracts of various cell lines, using KMT2E Antibody (CAB6142) at 1:1000 dilution. Secondary antibody: HRP Goat Anti-Rabbit IgG (H+L) (CABS014) at 1:10000 dilution. Lysates/proteins: 25ug per lane. Blocking buffer: 3% nonfat dry milk in TBST. Detection: ECL Enhanced Kit (CABM00021). Exposure time: 30s.



Immunohistochemistry of paraffin-embedded rat ovary using KMT2E antibody (CAB6142) at dilution of 1:200 (40x lens).



Immunohistochemistry of paraffin-embedded human breast cancer using KMT2E antibody (CAB6142) at dilution of 1:200 (40x lens).



Immunohistochemistry of paraffin-embedded mouse lung using KMT2E antibody (CAB6142) at dilution of 1:200 (40x lens).