

[KO Validated] SETDB1 Rabbit Polyclonal Antibody

CAB6145



Product Information

Size:

20uL, 50uL, 100uL, 200uL

Observed MW:

180KDa

Calculated MW:

44kDa/143kDa

Applications:

WB IHC IF

Reactivity:

Human, Mouse, Rat

Protein Background

This gene encodes a histone methyltransferase which regulates histone methylation, gene silencing, and transcriptional repression. This gene has been identified as a target for treatment in Huntington Disease, given that gene silencing and transcription dysfunction likely play a role in the disease pathogenesis. Alternatively spliced transcript variants of this gene have been described.

Immunogen information

Gene ID:

9869

Uniprot

Q15047

Synonyms:

SETDB1; ESET; H3-K9-HMTase4; KG1T; KMT1E; TDRD21

Antibody Information

Recommended dilutions:

WB 1:500 - 1:2000 IHC 1:50
- 1:100 IF 1:50 - 1:100

Source:

Rabbit

Isotype:

IgG

Purification:

Affinity purification

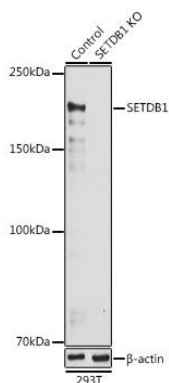
Immunogen:

Recombinant fusion protein containing a sequence corresponding to amino acids 1-397 of human SETDB1 (NP_001230420.1).

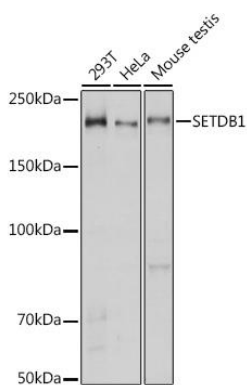
Storage:

Store at -20°C. Avoid freeze / thaw cycles. Buffer: PBS with 0.02% sodium azide, 50% glycerol, pH7.3.

Product Images



Western blot analysis of extracts of 293T cells, using SETDB1 antibody (CAB6145) at 1:1000 dilution. Secondary antibody: HRP Goat Anti-Rabbit IgG (H+L) (CABS014) at 1:10000 dilution. Lysates/proteins: 25ug per lane. Blocking buffer: 3% nonfat dry milk in TBST. Detection: ECL Basic Kit (CABM00020). Exposure time: 30s.



Immunohistochemistry of paraffin-embedded rat brain using SETDB1 antibody (CAB6145) at dilution of 1:100 (40x lens).