

SF3B3 Rabbit Polyclonal Antibody



CAB6146

Product Information

Size:

20uL, 50uL, 100uL, 200uL

Observed MW:

136kDa

Calculated MW:

30kDa/44kDa/135kDa

Applications:

WB IHC IF

Reactivity:

Human, Mouse, Rat

Antibody Information

Recommended dilutions:

WB 1:500 - 1:2000 IHC 1:50
- 1:200 IF 1:50 - 1:200

Source:

Rabbit

Isotype:

IgG

Purification:

Affinity purification

Protein Background

This gene encodes subunit 3 of the splicing factor 3b protein complex. Splicing factor 3b, together with splicing factor 3a and a 12S RNA unit, forms the U2 small nuclear ribonucleoproteins complex (U2 snRNP). The splicing factor 3b/3a complex binds pre-mRNA upstream of the intron's branch site in a sequence independent manner and may anchor the U2 snRNP to the pre-mRNA. Splicing factor 3b is also a component of the minor U12-type spliceosome. Subunit 3 has also been identified as a component of the STAGA (SPT3-TAF(II)31-GCN5L acetylase) transcription coactivator-HAT (histone acetyltransferase) complex, and the TFTC (TATA-binding-protein-free TAF(II)-containing complex). These complexes may function in chromatin modification, transcription, splicing, and DNA repair.

Immunogen information

Gene ID:

23450

Uniprot

Q15393

Synonyms:

SF3B3; RSE1; SAP130; SF3b130; STAF130

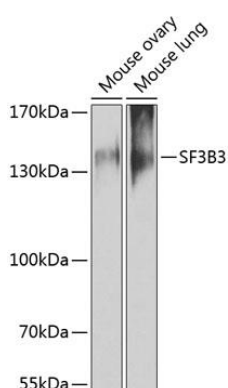
Immunogen:

Recombinant fusion protein containing a sequence corresponding to amino acids 948-1217 of human SF3B3 (NP_036558.3).

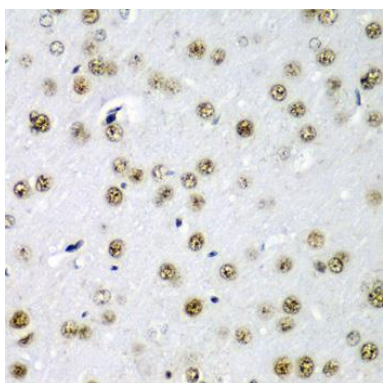
Storage:

Store at -20°C. Avoid freeze / thaw cycles. Buffer: PBS with 0.02% sodium azide, 50% glycerol, pH7.3.

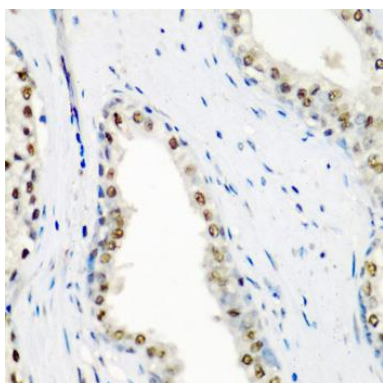
Product Images



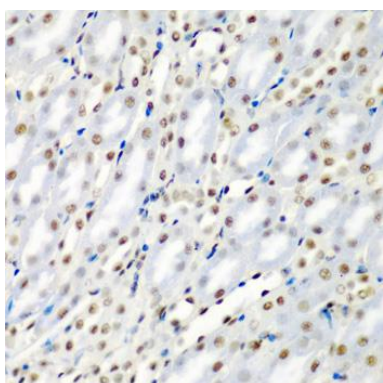
Western blot analysis of extracts of various cell lines, using SF3B3 antibody (CAB6146) at 1:1000 dilution. Secondary antibody: HRP Goat Anti-Rabbit IgG (H+L) (CABS014) at 1:10000 dilution. Lysates/proteins: 25ug per lane. Blocking buffer: 3% nonfat dry milk in TBST. Detection: ECL Enhanced Kit (CABM00021).



Immunohistochemistry of paraffin-embedded rat brain using SF3B3 antibody (CAB6146) at dilution of 1:200 (40x lens).



Immunohistochemistry of paraffin-embedded human prostate using SF3B3 antibody (CAB6146) at dilution of 1:200 (40x lens).



Immunohistochemistry of paraffin-embedded mouse kidney using SF3B3 antibody (CAB6146) at dilution of 1:200 (40x lens).