

# TCF19 Rabbit Polyclonal Antibody



CAB6147

---

## Product Information

### Size:

20uL, 50uL, 100uL, 200uL

### Observed MW:

37kDa

### Calculated MW:

37kDa

### Applications:

WB

### Reactivity:

Human, Mouse, Rat

## Protein Background

This gene encodes a protein that contains a PHD-type zinc finger domain and likely functions as a transcription factor. The encoded protein plays a role proliferation and apoptosis of pancreatic beta cells. Alternative splicing results in multiple transcript variants.

## Immunogen information

### Gene ID:

6941

### Uniprot

Q9Y242

### Synonyms:

TCF19; SC1; TCF-19

## Antibody Information

### Recommended dilutions:

WB 1:500 - 1:2000

### Source:

Rabbit

### Isotype:

IgG

### Purification:

Affinity purification

### Immunogen:

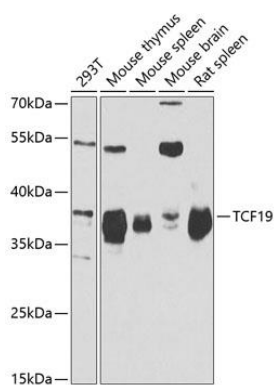
Recombinant fusion protein containing a sequence corresponding to amino acids 1-290 of human TCF19 (NP\_009040.2).

### Storage:

Store at -20°C. Avoid freeze / thaw cycles. Buffer: PBS with 0.02% sodium azide, 50% glycerol, pH7.3.

## Product Images

---



Western blot analysis of extracts of various cell lines, using TCF19 antibody (CAB6147) at 1:1000 dilution. Secondary antibody: HRP Goat Anti-Rabbit IgG (H+L) (CABS014) at 1:10000 dilution. Lysates/proteins: 25ug per lane. Blocking buffer: 3% nonfat dry milk in TBST. Detection: ECL Basic Kit (CABM00020). Exposure time: 30s.