

E2F6 Rabbit Polyclonal Antibody



CAB6151

Product Information

Size:

20uL, 50uL, 100uL, 200uL

Observed MW:

37kDa

Calculated MW:

22kDa/28kDa/31kDa

Applications:

WB IHC IF IP ChIP

Reactivity:

Human, Mouse

Protein Background

This gene encodes a member of a family of transcription factors that play a crucial role in the control of the cell cycle. The protein encoded by this gene lacks the transactivation and tumor suppressor protein association domains found in other family members, and contains a modular suppression domain that functions in the inhibition of transcription. It interacts in a complex with chromatin modifying factors. There are pseudogenes for this gene on chromosomes 22 and X. Alternative splicing results in multiple transcript variants.

Immunogen information

Gene ID:

1876

Uniprot

O75461

Synonyms:

E2F6; E2F-6

Antibody Information

Recommended dilutions:

WB 1:500 - 1:2000 IHC 1:50
- 1:200 IF 1:20 - 1:100 IP
1:50 - 1:100 ChIP 1:20 -
1:50

Source:

Rabbit

Isotype:

IgG

Purification:

Affinity purification

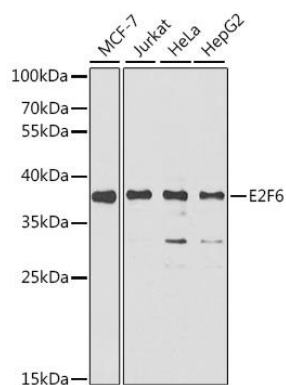
Immunogen:

Recombinant fusion protein containing a sequence corresponding to amino acids 1-281 of human E2F6 (NP_937987.2).

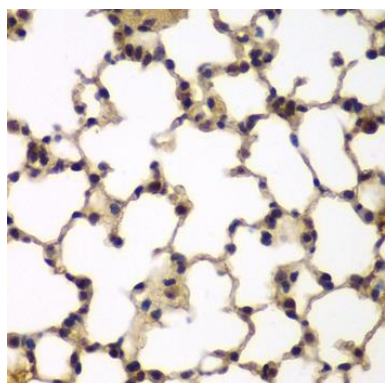
Storage:

Store at -20°C. Avoid freeze / thaw cycles. Buffer: PBS with 0.02% sodium azide, 50% glycerol, pH7.3.

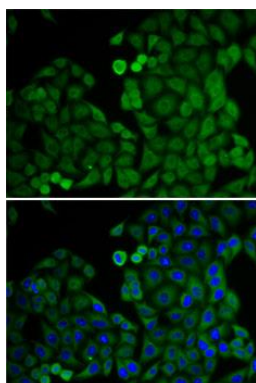
Product Images



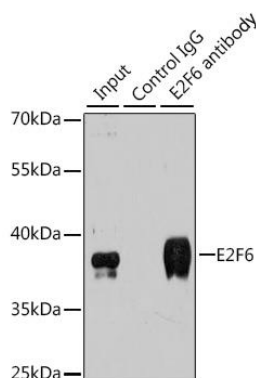
Western blot analysis of extracts of various cell lines, using E2F6 antibody (CAB6151) at 1:1000 dilution. Secondary antibody: HRP Goat Anti-Rabbit IgG (H+L) (CABS014) at 1:10000 dilution. Lysates/proteins: 25ug per lane. Blocking buffer: 3% nonfat dry milk in TBST. Detection: ECL Basic Kit (CABM00020). Exposure time: 90s.



Immunohistochemistry of paraffin-embedded mouse lung using E2F6 antibody (CAB6151) at dilution of 1:200 (40x lens).



Immunofluorescence analysis of U2OS cells using E2F6 antibody (CAB6151). Blue: DAPI for nuclear staining.



Immunoprecipitation analysis of 200ug extracts of MCF-7 cells using 3ug E2F6 antibody (CAB6151). Western blot was performed from the immunoprecipitate using E2F6 antibody (CAB6151) at a dilution of 1:500.