

# [KO Validated] GSK3Beta Rabbit Polyclonal Antibody

## CAB6164



### Product Information

**Size:**

20uL, 50uL, 100uL, 200uL

**Observed MW:**

46kDa

**Calculated MW:**

46kDa/48kDa

**Applications:**

WB IF IP

**Reactivity:**

Human, Mouse, Rat

### Protein Background

The protein encoded by this gene is a serine-threonine kinase, belonging to the glycogen synthase kinase subfamily. It is involved in energy metabolism, neuronal cell development, and body pattern formation. Polymorphisms in this gene have been implicated in modifying risk of Parkinson disease, and studies in mice show that overexpression of this gene may be relevant to the pathogenesis of Alzheimer disease. Alternatively spliced transcript variants encoding different isoforms have been found for this gene.

### Immunogen information

**Gene ID:**

2932

**Uniprot**

P49841

**Synonyms:**

GSK3B; gsk-3Beta

### Antibody Information

**Recommended dilutions:**

WB 1:500 - 1:1000 IF 1:50 - 1:100 IP 1:50 - 1:100

**Source:**

Rabbit

**Isotype:**

IgG

**Purification:**

Affinity purification

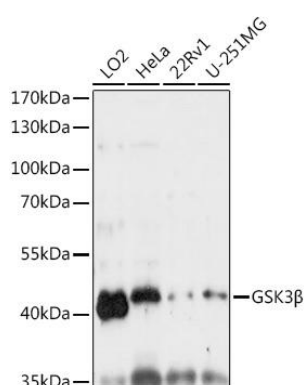
**Immunogen:**

A synthetic peptide corresponding to a sequence within amino acids 300 to the C-terminus of human GSK3Beta (NP\_001139628.1).

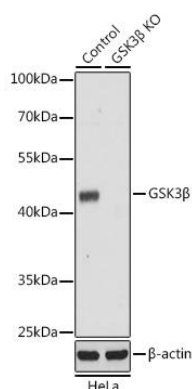
**Storage:**

Store at -20°C. Avoid freeze / thaw cycles. Buffer: PBS with 0.02% sodium azide, 50% glycerol, pH7.3.

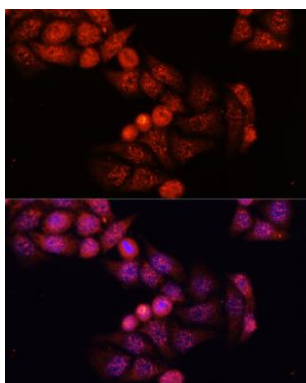
## Product Images



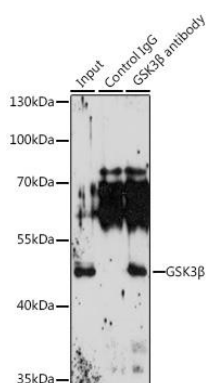
Western blot analysis of extracts of various cell lines, using GSK3beta antibody (CAB6164) at 1:1000 dilution. Secondary antibody: HRP Goat Anti-Rabbit IgG (H+L) (CABS014) at 1:10000 dilution. Lysates/proteins: 25ug per lane. Blocking buffer: 3% nonfat dry milk in TBST. Detection: ECL Basic Kit (CABM00020). Exposure time: 30s.



Western blot analysis of extracts from normal (control) and GSK3beta knockout (KO) HeLa cells, using GSK3b antibody (CAB6164) at 1:1000 dilution. Secondary antibody: HRP Goat Anti-Rabbit IgG (H+L) (CABS014) at 1:10000 dilution. Lysates/proteins: 25ug per lane. Blocking buffer: 3% nonfat dry milk in TBST. Detection: ECL Enhanced Kit (CABM00021). Exposure time: 90s.



Immunofluorescence analysis of HeLa cells using GSK3beta antibody (CAB6164) at dilution of 1:100. Blue: DAPI for nuclear staining.



Immunoprecipitation analysis of 200ug extracts of 22Rv1 cells, using 3 ug GSK3b antibody (CAB6164). Western blot was performed from the immunoprecipitate using GSK3b antibody (CAB6164) at a dilution of 1:1000.