

CSF3 Rabbit Polyclonal Antibody



CAB6178

Product Information

Size:

20uL, 50uL, 100uL, 200uL

Observed MW:

22kDa

Calculated MW:

18kDa/21kDa/22kDa

Applications:

WB IHC

Reactivity:

Human, Mouse, Rat

Protein Background

The protein encoded by this gene is a cytokine that controls the production, differentiation, and function of granulocytes. The active protein is found extracellularly. Alternatively spliced transcript variants have been described for this gene.

Immunogen information

Gene ID:

1440

Uniprot

P09919

Synonyms:

CSF3; C17orf33; CSF3OS; GCSF

Antibody Information

Recommended dilutions:

WB 1:500 - 1:1000 IHC 1:50
- 1:200

Source:

Rabbit

Isotype:

IgG

Purification:

Affinity purification

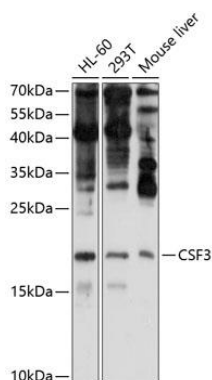
Immunogen:

Recombinant fusion protein containing a sequence corresponding to amino acids 30-207 of human CSF3 (NP_000750.1).

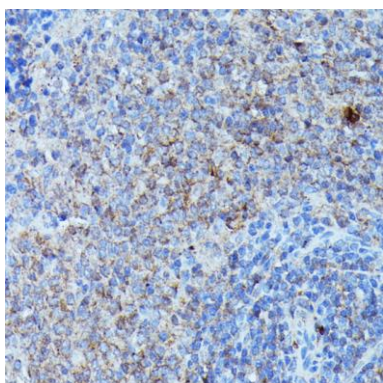
Storage:

Store at -20°C. Avoid freeze / thaw cycles. Buffer: PBS with 0.02% sodium azide, 50% glycerol, pH7.3.

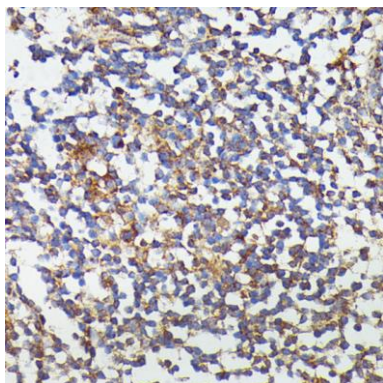
Product Images



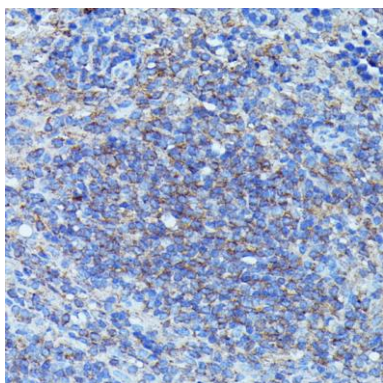
Western blot analysis of extracts of various cell lines, using CSF3 antibody (CAB6178) at 1:1000 dilution. Secondary antibody: HRP Goat Anti-Rabbit IgG (H+L) (CABS014) at 1:10000 dilution. Lysates/proteins: 25ug per lane. Blocking buffer: 3% nonfat dry milk in TBST. Detection: ECL Enhanced Kit (CABM00021). Exposure time: 90s.



Immunohistochemistry of paraffin-embedded rat spleen using CSF3 antibody (CAB6178) at dilution of 1:100 (40x lens).



Immunohistochemistry of paraffin-embedded human colon using CSF3 antibody (CAB6178) at dilution of 1:100 (40x lens).



Immunohistochemistry of paraffin-embedded mouse spleen using CSF3 antibody (CAB6178) at dilution of 1:100 (40x lens).