

# MSLN Rabbit Polyclonal Antibody



CAB6183

## Product Information

### Size:

20uL, 50uL, 100uL, 200uL

### Observed MW:

69kDa

### Calculated MW:

67kDa/68kDa/71kDa

### Applications:

WB IF

### Reactivity:

Human

## Antibody Information

### Recommended dilutions:

WB 1:500 - 1:2000 IF 1:10 - 1:100

### Source:

Rabbit

### Isotype:

IgG

### Purification:

Affinity purification

## Protein Background

This gene encodes a preprotein that is proteolytically processed to generate two protein products, megakaryocyte potentiating factor and mesothelin. Megakaryocyte potentiating factor functions as a cytokine that can stimulate colony formation of bone marrow megakaryocytes. Mesothelin is a glycosylphosphatidylinositol-anchored cell-surface protein that may function as a cell adhesion protein. This protein is overexpressed in epithelial mesotheliomas, ovarian cancers and in specific squamous cell carcinomas. Alternative splicing results in multiple transcript variants, at least one of which encodes an isoform that is proteolytically processed.

## Immunogen information

### Gene ID:

10232

### Uniprot

Q13421

### Synonyms:

MSLN; MPF; SMRP

### Immunogen:

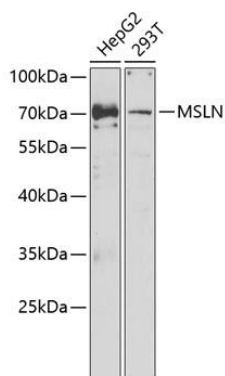
Recombinant fusion protein containing a sequence corresponding to amino acids 37-296 of human MSLN (NP\_001170826.1).

### Storage:

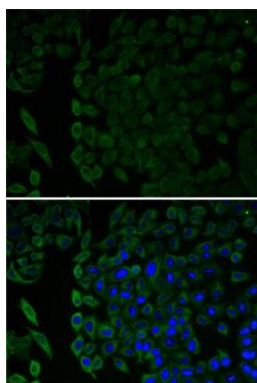
Store at -20°C. Avoid freeze / thaw cycles. Buffer: PBS with 0.02% sodium azide, 50% glycerol, pH7.3.

## Product Images

---



Western blot analysis of extracts of various cell lines, using MSLN antibody (CAB6183) at 1:1000 dilution. Secondary antibody: HRP Goat Anti-Rabbit IgG (H+L) (CABS014) at 1:10000 dilution. Lysates/proteins: 25ug per lane. Blocking buffer: 3% nonfat dry milk in TBST.



Immunofluorescence analysis of U2OS cells using MSLN antibody (CAB6183). Blue: DAPI for nuclear staining.