

# LY86 Rabbit Polyclonal Antibody



CAB6185

---

## Product Information

### Size:

20uL, 50uL, 100uL, 200uL

### Observed MW:

24kDa

### Calculated MW:

17kDa

### Applications:

WB IHC

### Reactivity:

Human, Mouse

## Antibody Information

### Recommended dilutions:

WB 1:500 - 1:2000 IHC 1:50  
- 1:200

### Source:

Rabbit

### Isotype:

IgG

### Purification:

Affinity purification

## Protein Background

### Immunogen information

#### Gene ID:

9450

#### Uniprot

O95711

#### Synonyms:

LY86; MD-1; MD1; MMD-1; dJ80N2.1

#### Immunogen:

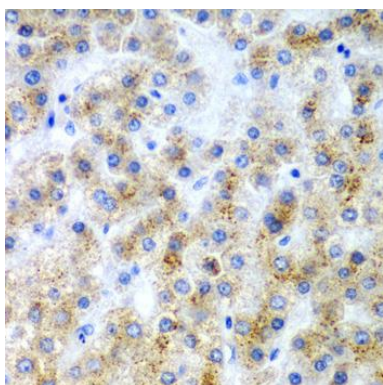
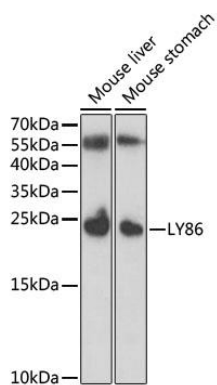
Recombinant fusion protein containing a sequence corresponding to amino acids 21-162 of human LY86 (NP\_004262.1).

#### Storage:

Store at -20°C. Avoid freeze / thaw cycles. Buffer: PBS with 0.02% sodium azide, 50% glycerol, pH7.3.

## Product Images

---



Western blot analysis of extracts of various cell lines, using LY86 antibody (CAB6185) at 1:1000 dilution. Secondary antibody: HRP Goat Anti-Rabbit IgG (H+L) (CABS014) at 1:10000 dilution. Lysates/proteins: 25ug per lane. Blocking buffer: 3% nonfat dry milk in TBST.

Immunohistochemistry of paraffin-embedded human liver cancer using LY86 antibody (CAB6185) at dilution of 1:200 (40x lens).