

# SMYD5 Rabbit Polyclonal Antibody



CAB6191

---

## Product Information

### Size:

20uL, 50uL, 100uL, 200uL

### Observed MW:

48kDa

### Calculated MW:

47kDa

### Applications:

WB IHC IF

### Reactivity:

Human, Mouse

## Antibody Information

### Recommended dilutions:

WB 1:500 - 1:2000 IHC 1:50  
- 1:100 IF 1:50 - 1:100

### Source:

Rabbit

### Isotype:

IgG

### Purification:

Affinity purification

## Protein Background

### Immunogen information

#### Gene ID:

10322

#### Uniprot

Q6GMV2

#### Synonyms:

SMYD5; NN8-4AG; RAI15; RRG1; ZMYND23

#### Immunogen:

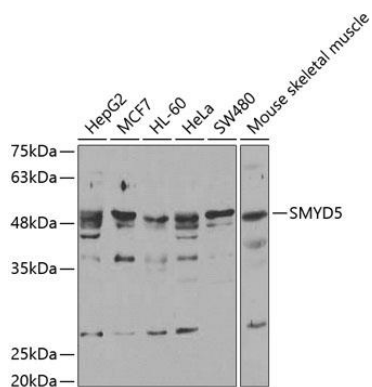
Recombinant protein of human SMYD5

#### Storage:

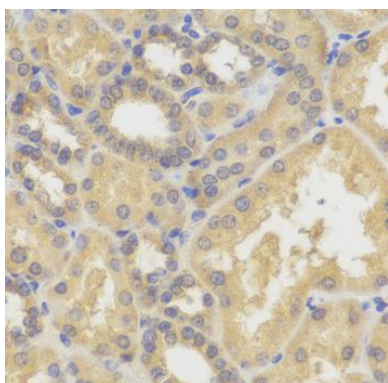
Store at -20°C. Avoid freeze / thaw cycles. Buffer: PBS with 0.02% sodium azide, 50% glycerol, pH7.3.

## Product Images

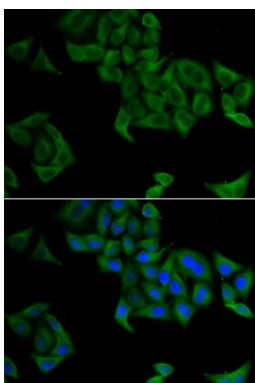
---



Western blot analysis of extracts of various cell lines, using SMYD5 antibody (CAB6191). Secondary antibody: HRP Goat Anti-Rabbit IgG (H+L) (CABS014) at 1:10000 dilution. Lysates/proteins: 25ug per lane. Blocking buffer: 3% nonfat dry milk in TBST.



Immunohistochemistry of paraffin-embedded human kidney using SMYD5 antibody (CAB6191).



Immunofluorescence analysis of A549 cells using SMYD5 antibody (CAB6191). Blue: DAPI for nuclear staining.