

CUL4B Rabbit Polyclonal Antibody



CAB6198

Product Information

Size:

50uL, 100uL

Observed MW:

100kDa

Calculated MW:

84kDa/102kDa/103kDa

Applications:

WB IHC IF IP

Reactivity:

Human, Mouse

Protein Background

This gene is a member of the cullin family. The encoded protein forms a complex that functions as an E3 ubiquitin ligase and catalyzes the polyubiquitination of specific protein substrates in the cell. The protein interacts with a ring finger protein, and is required for the proteolysis of several regulators of DNA replication including chromatin licensing and DNA replication factor 1 and cyclin E. Multiple transcript variants encoding different isoforms have been found for this gene.

Immunogen information

Gene ID:

8450

Uniprot

Q13620

Synonyms:

CUL4B; CUL-4B; MRXHF2; MRXS15; MRXSC; SFM2; cullin-4B

Antibody Information

Recommended dilutions:

WB 1:500 - 1:2000 IHC 1:50
- 1:200 IF 1:20 - 1:100 IP
1:20 - 1:100

Source:

Rabbit

Isotype:

IgG

Purification:

Affinity purification

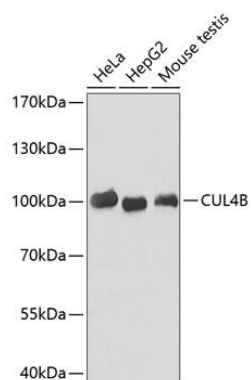
Immunogen:

Recombinant protein of human CUL4B

Storage:

Store at -20°C. Avoid freeze / thaw cycles. Buffer: PBS with 0.02% sodium azide, 50% glycerol, pH7.3.

Product Images



Western blot analysis of extracts of various cell lines, using CUL4B antibody (CAB6198). Secondary antibody: HRP Goat Anti-Rabbit IgG (H+L) (CABS014) at 1:10000 dilution. Lysates/proteins: 25ug per lane. Blocking buffer: 3% nonfat dry milk in TBST.